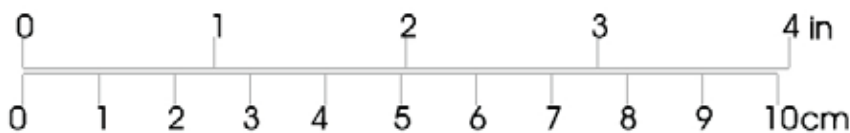
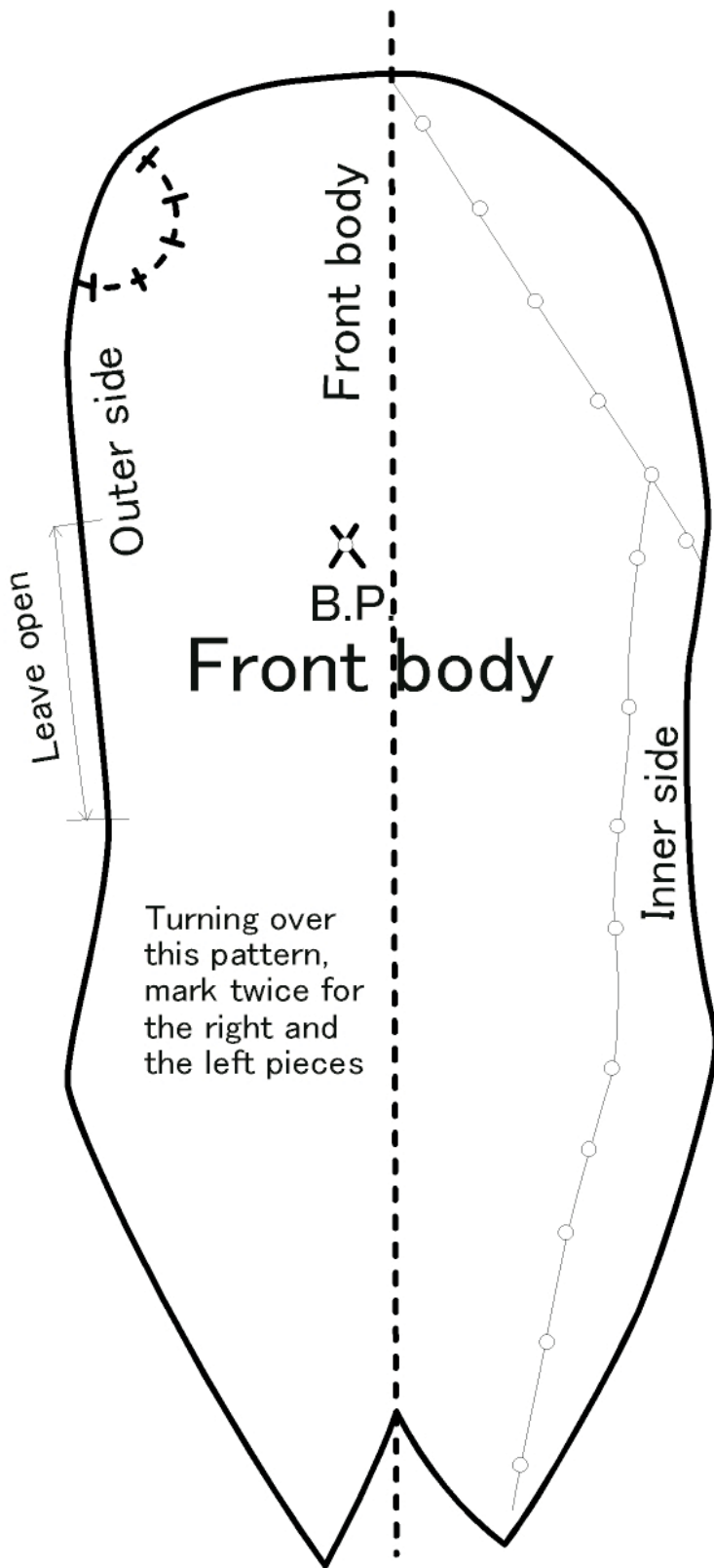


Each pattern shows shape of piece for RIGHT side. (ex. RIGHT body, RIGHT hand) Using backside of the patterns mark pieces for LEFT side.

Cut out fabric pieces leaving 1/4" seam allowance.

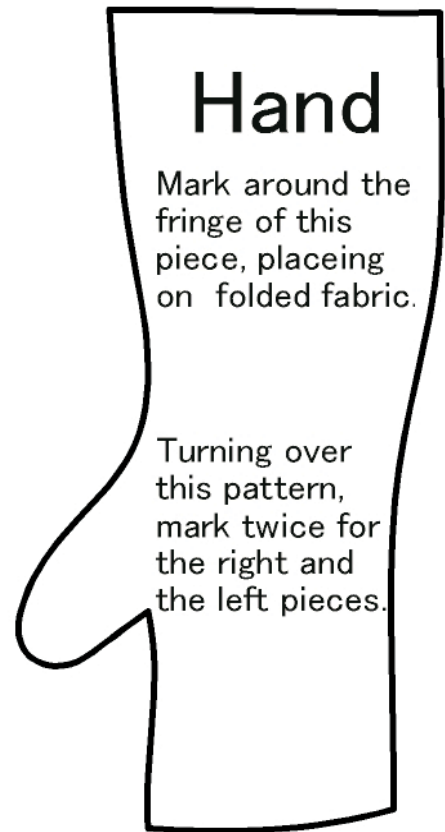
## Sheet 1



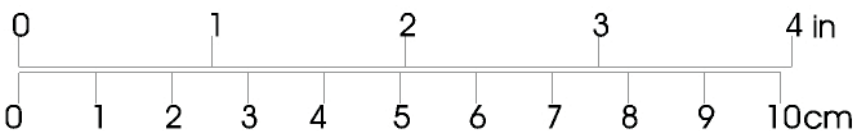


Each pattern shows shape of piece for RIGHT side. (ex. RIGHT body, RIGHT hand) Using backside of the patterns mark pieces for LEFT side.

Cut out fabric pieces leaving 1/4" seam allowance.



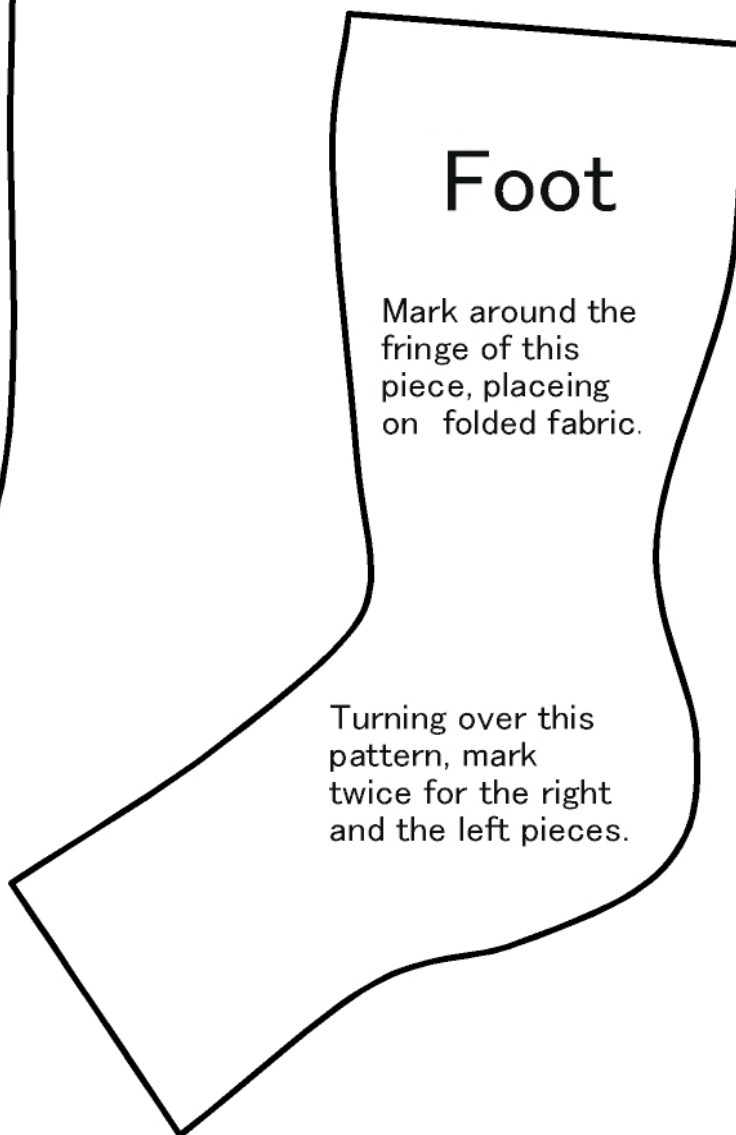
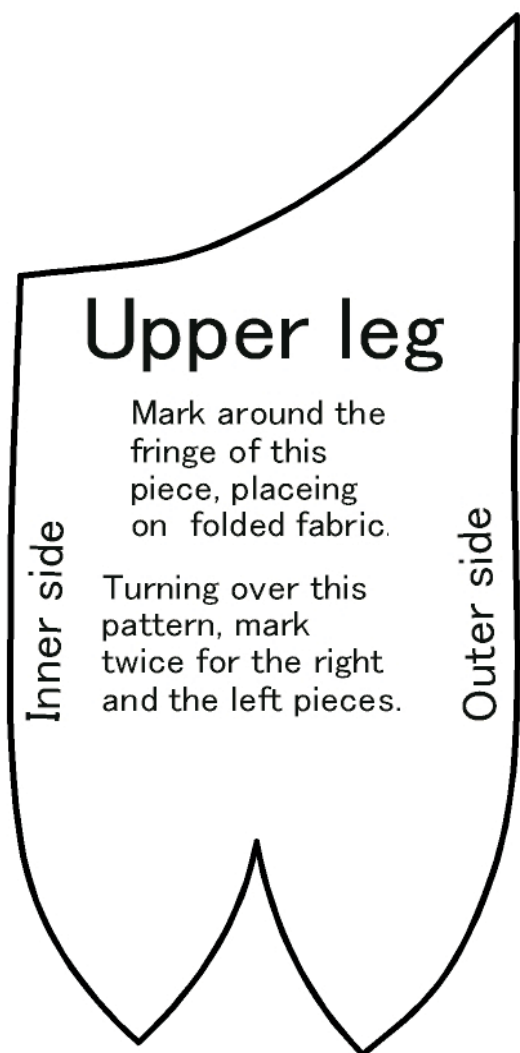
## Sheet 2



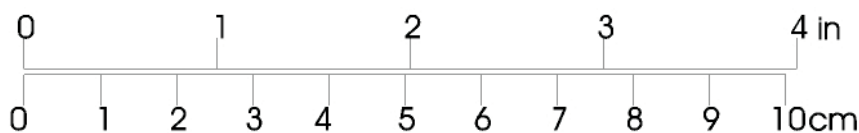
Adorable dimpled boy Soft cloth doll  
 Copy right 2006 by Aruhi  
 See below for license of this pattern  
<http://doku.bimyo.jp/scdj/license.html>

Each pattern shows shape of piece for RIGHT side. (ex. RIGHT body, RIGHT hand) Using backside of the patterns mark pieces for LEFT side.

Cut out fabric pieces leaving 1/4" seam allowance.

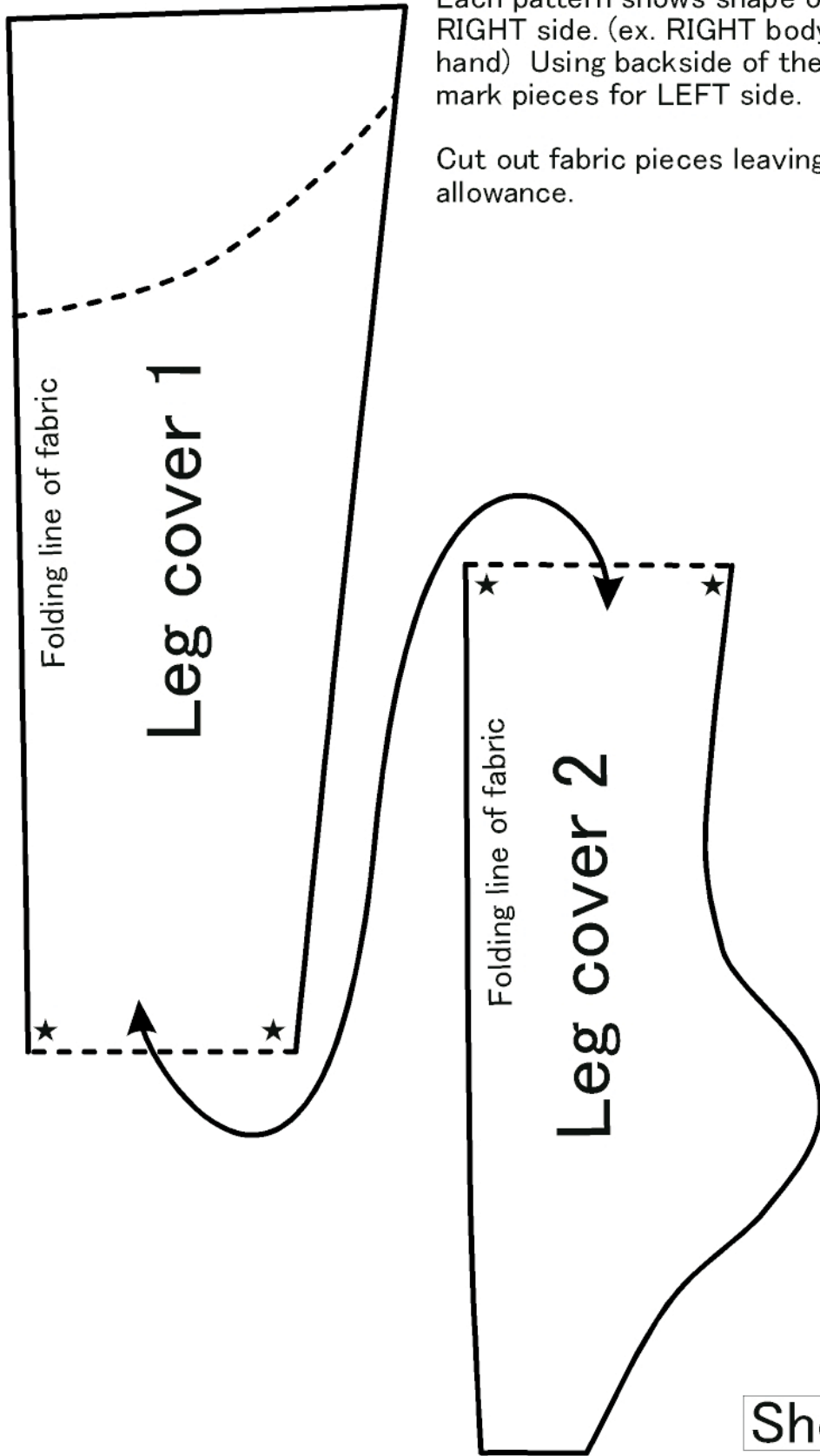


## Sheet 3

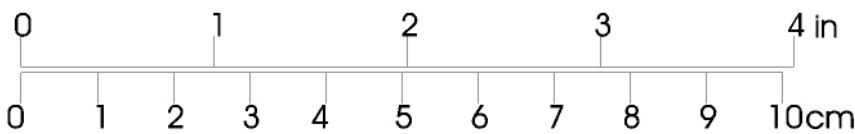


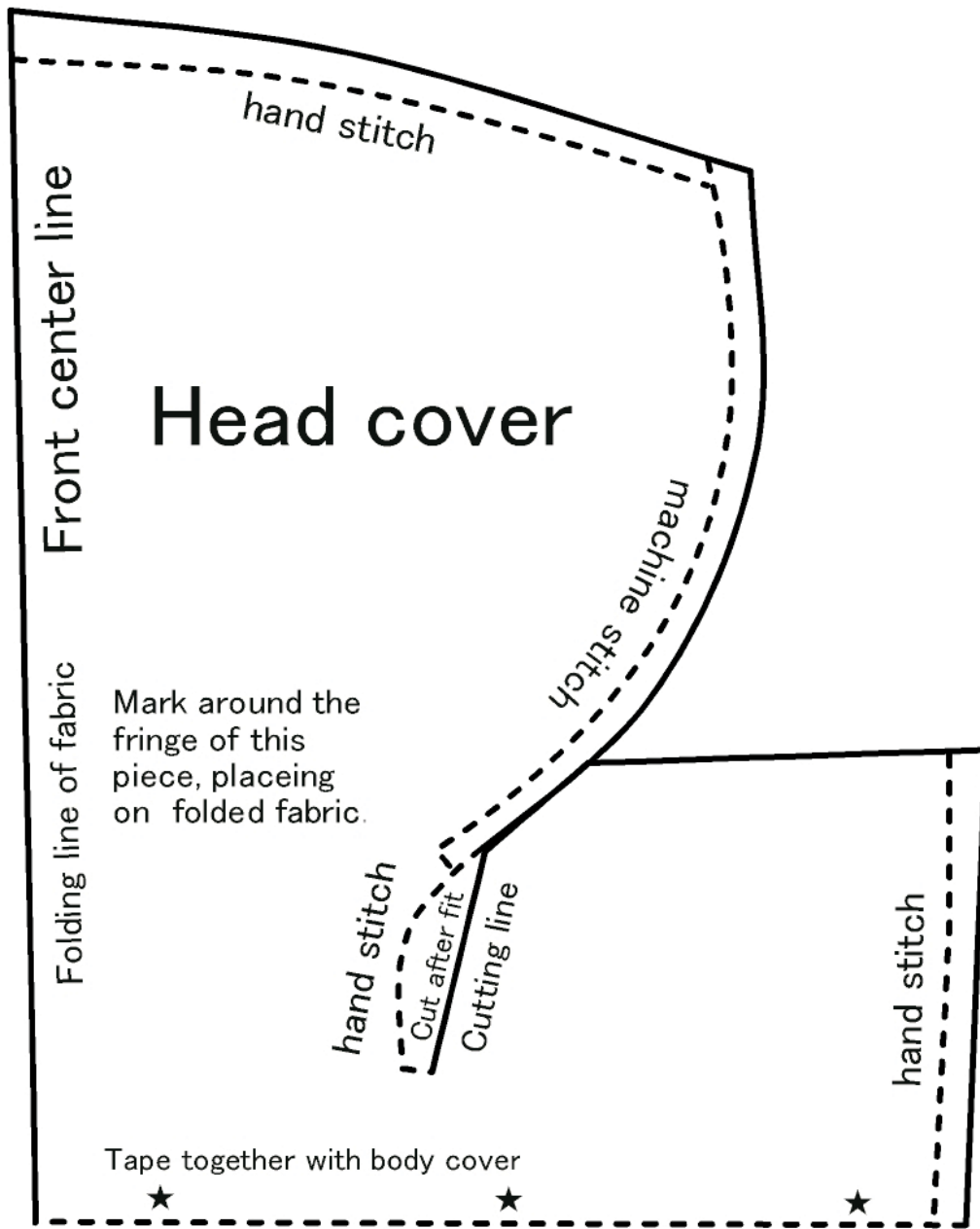
Each pattern shows shape of piece for RIGHT side. (ex. RIGHT body, RIGHT hand) Using backside of the patterns mark pieces for LEFT side.

Cut out fabric pieces leaving 1/4" seam allowance.

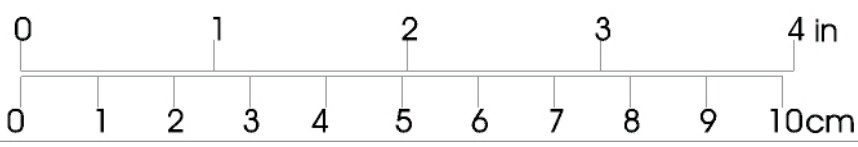


## Sheet 4

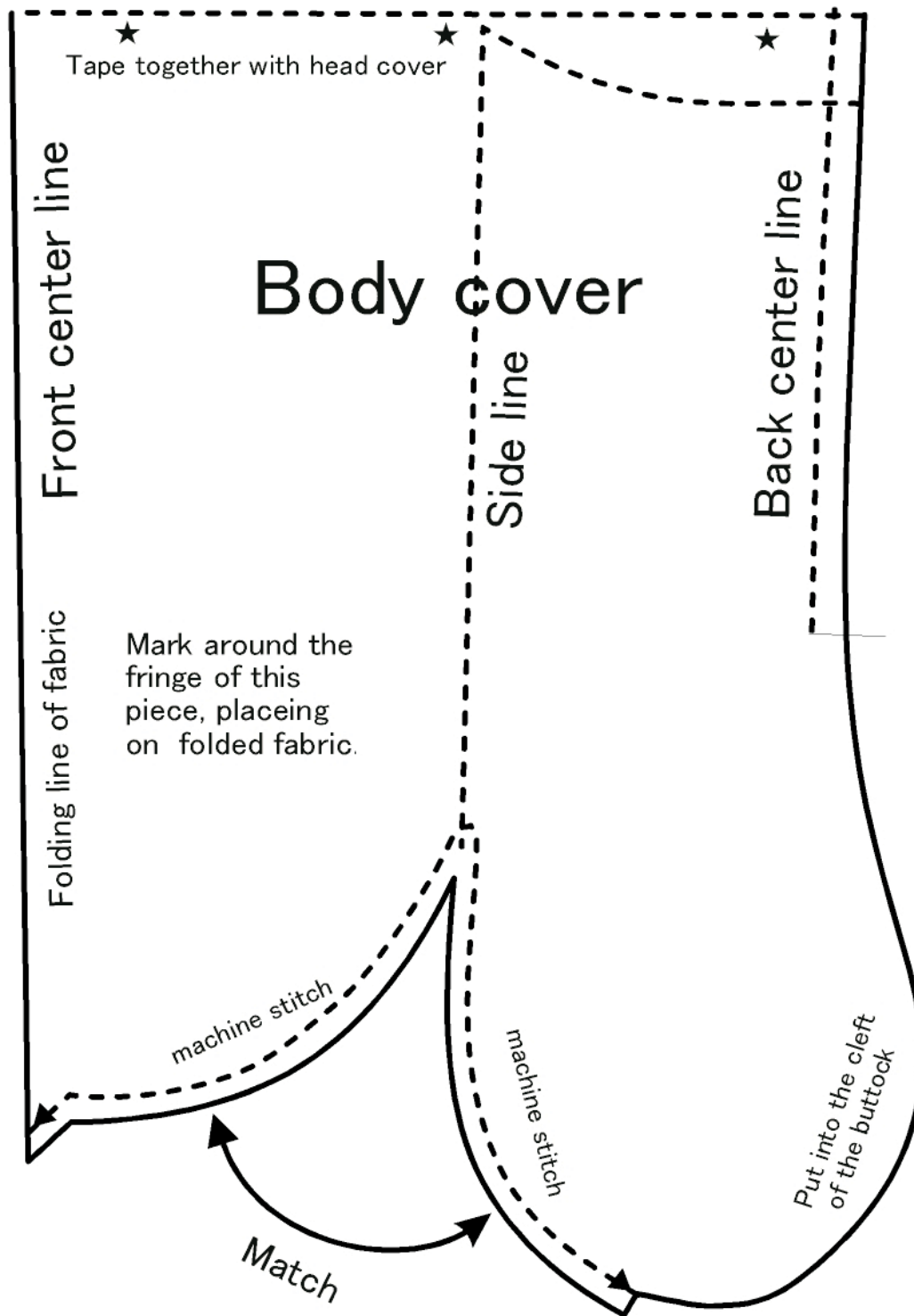




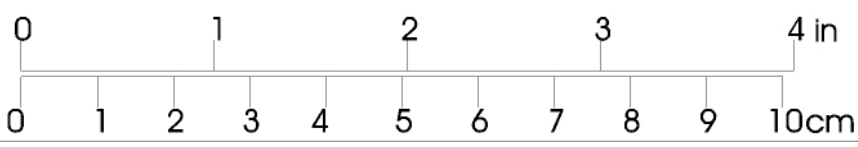
# Sheet 5



Adorable dimpled boy Soft cloth doll  
 Copy right 2006 by Aruhi  
 See below for license of this pattern  
<http://doku.bimyo.jp/scdj/license.html>



**Sheet 6**



Adorable dimpled boy Soft cloth doll  
 Copy right 2006 by Aruhi  
 See below for license of this pattern  
<http://doku.bimyo.jp/scdj/license.html>