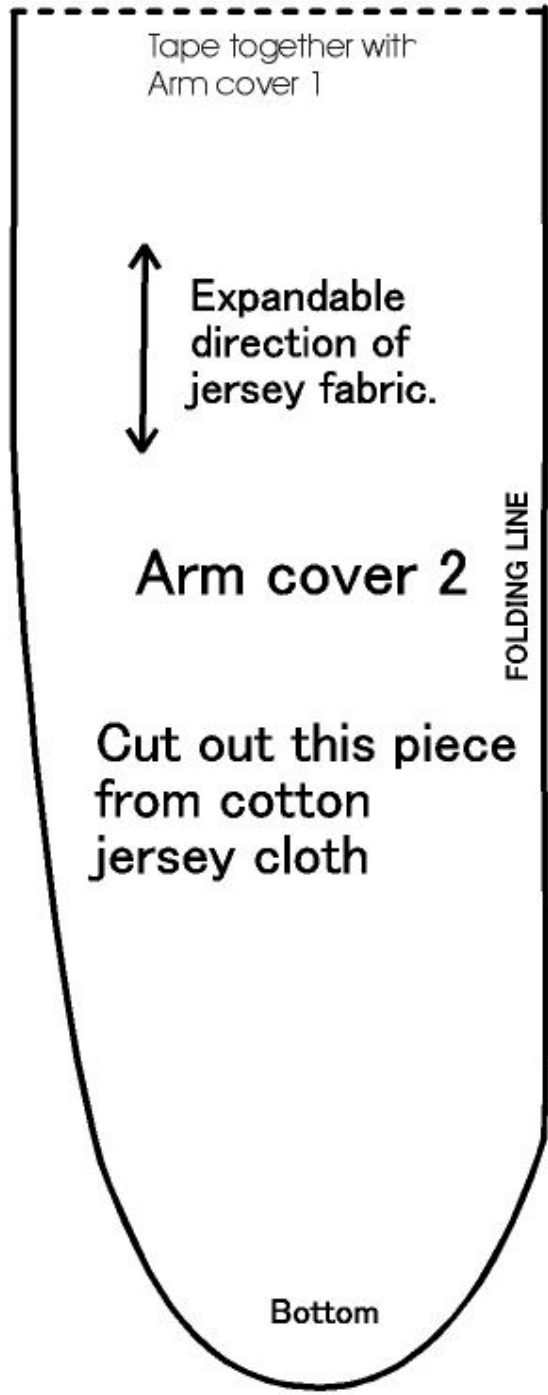
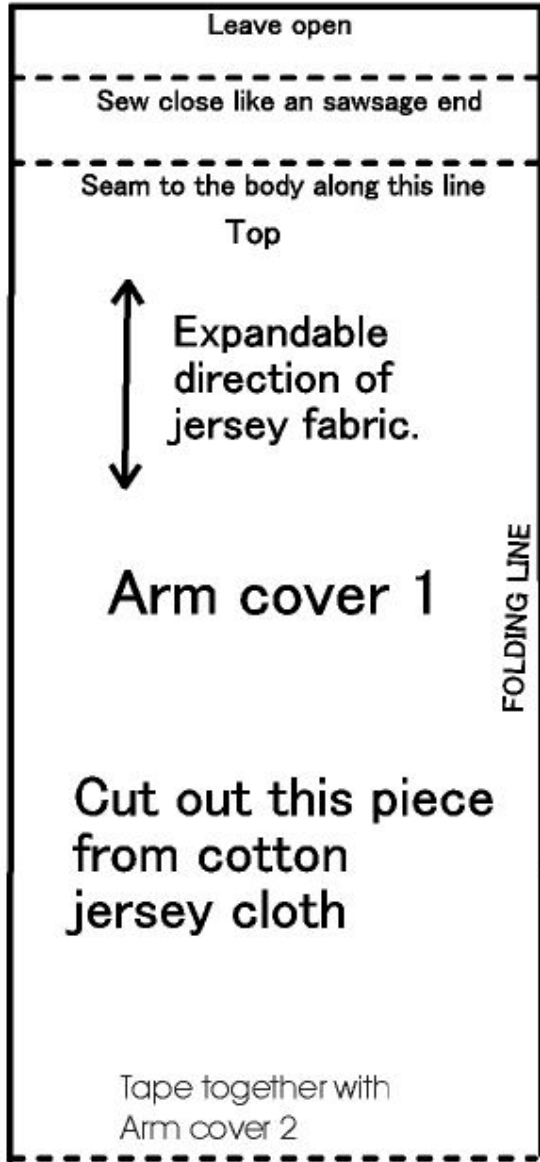


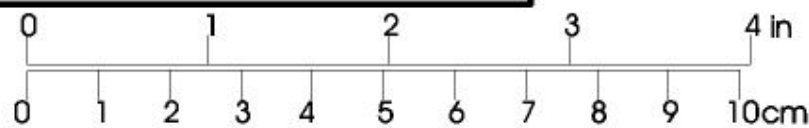
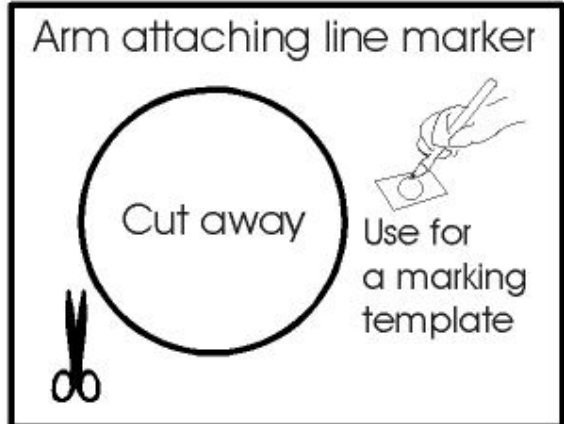
Sheet 1

Absolute sweet Cindy in the scullery
 Soft cloth doll DMX-80
 Copy right 2004 by Doku (doku@newon.org)
 See below for license of this pattern
www.newon.org/doku/hobby/scd/license.html



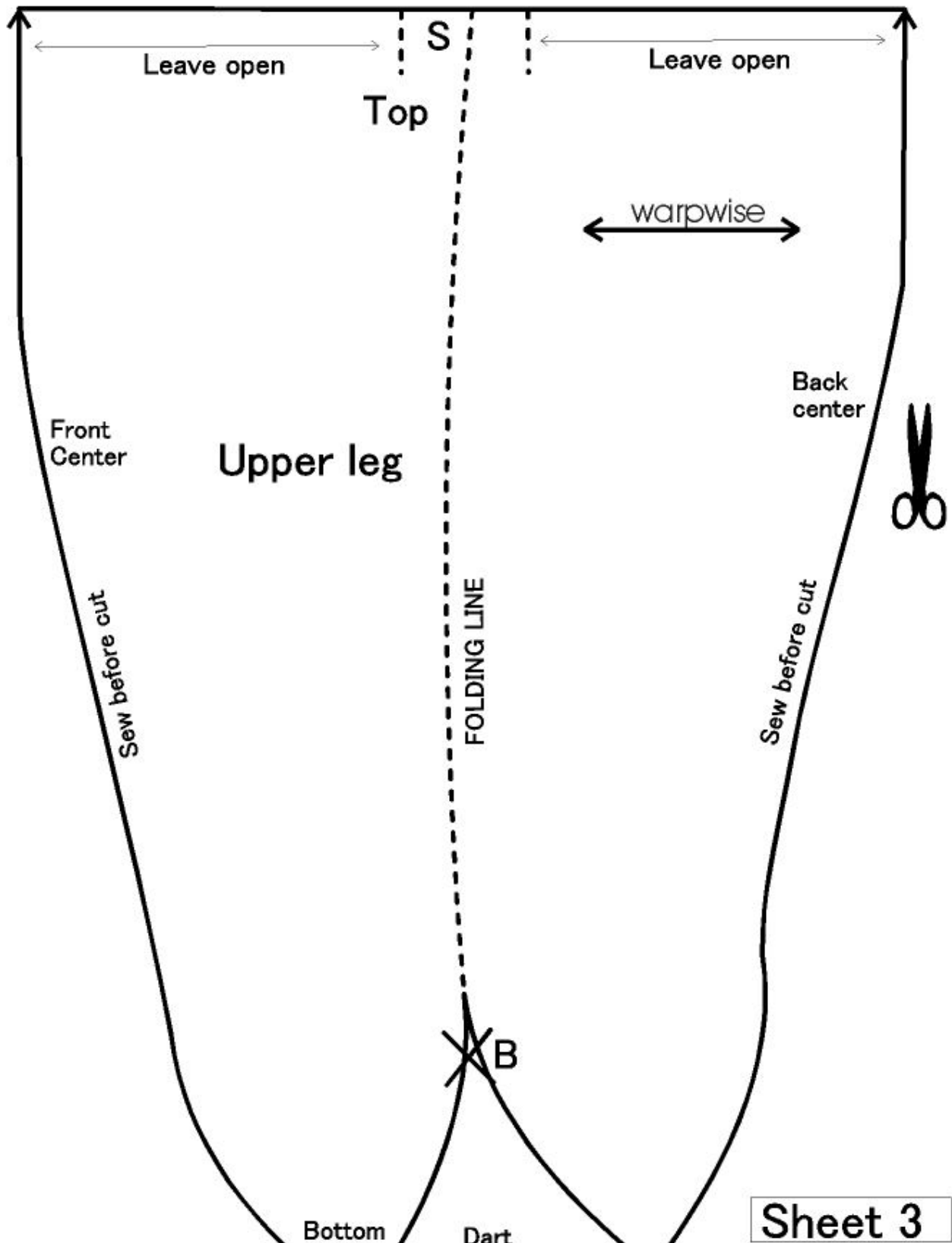
Cut out this piece from cotton jersey cloth

Cut out this piece from cotton jersey cloth



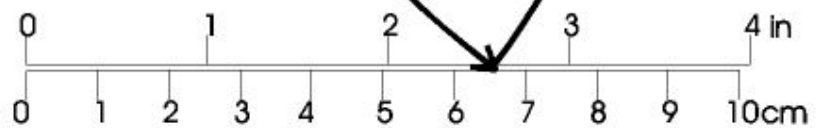
Sheet 2

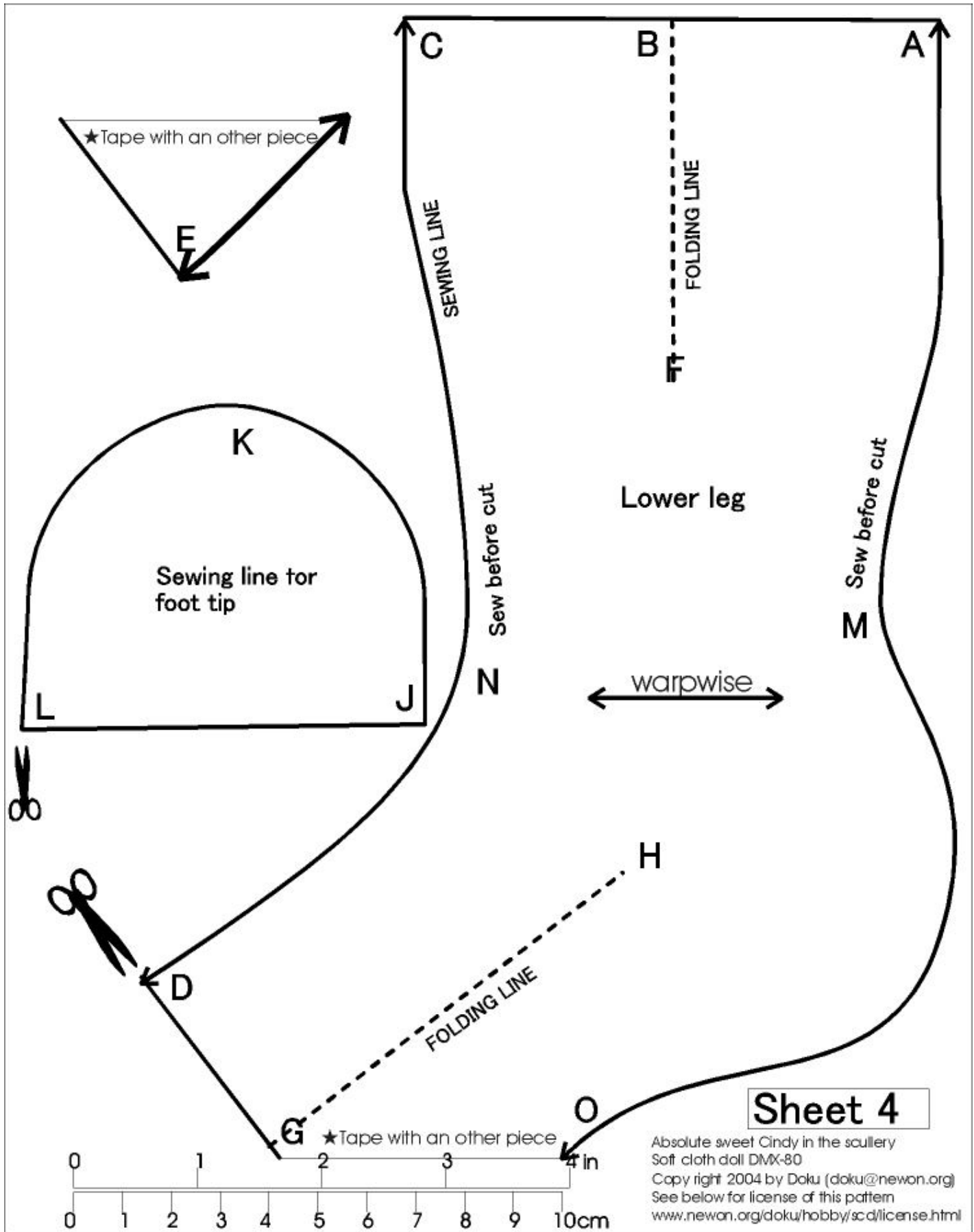
Absolute sweet Cindy in the scullery
 Soft cloth doll DMX-80
 Copy right 2004 by Doku (doku@newon.org)
 See below for license of this pattern
www.newon.org/doku/hobby/scd/license.html



Sheet 3

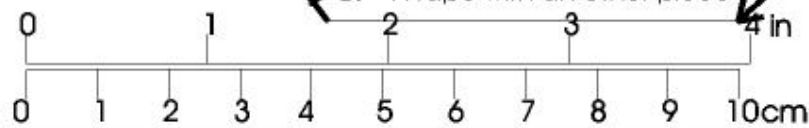
absolute sweet Cindy in the scullery
 soft cloth doll DMX-80
 Copyright 2004 by Doku (doku@newon.org)
 See below for license of this pattern
www.newon.org/doku/hobby/scd/license.html

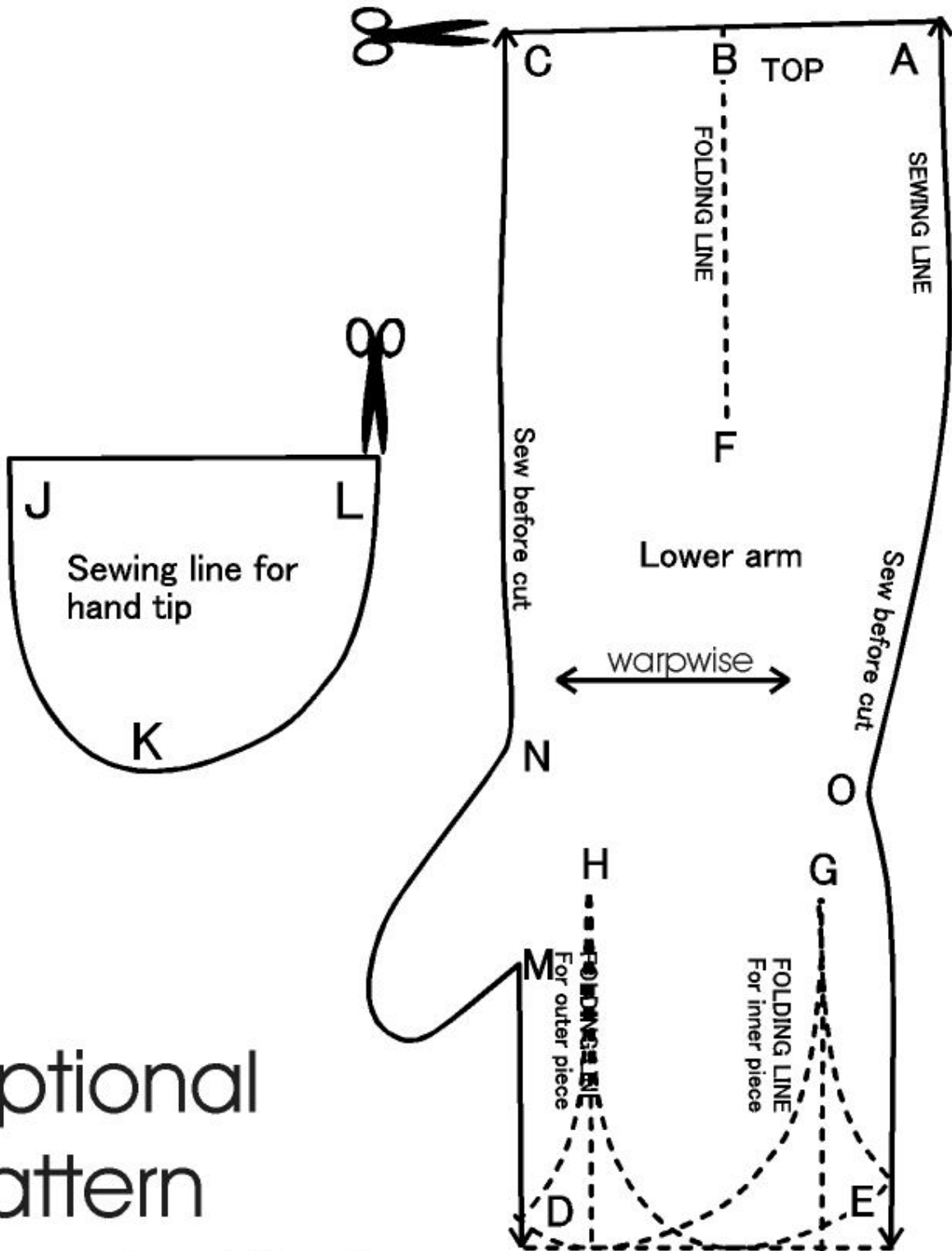




Sheet 4

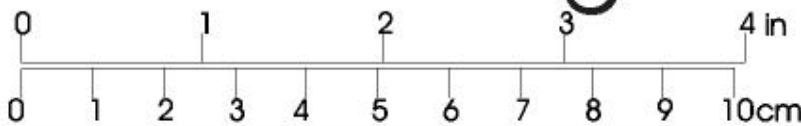
Absolute sweet Cindy in the scullery
 Soft cloth doll DMX-80
 Copy right 2004 by Doku (doku@newon.org)
 See below for license of this pattern
www.newon.org/doku/hobby/sc.d/license.html



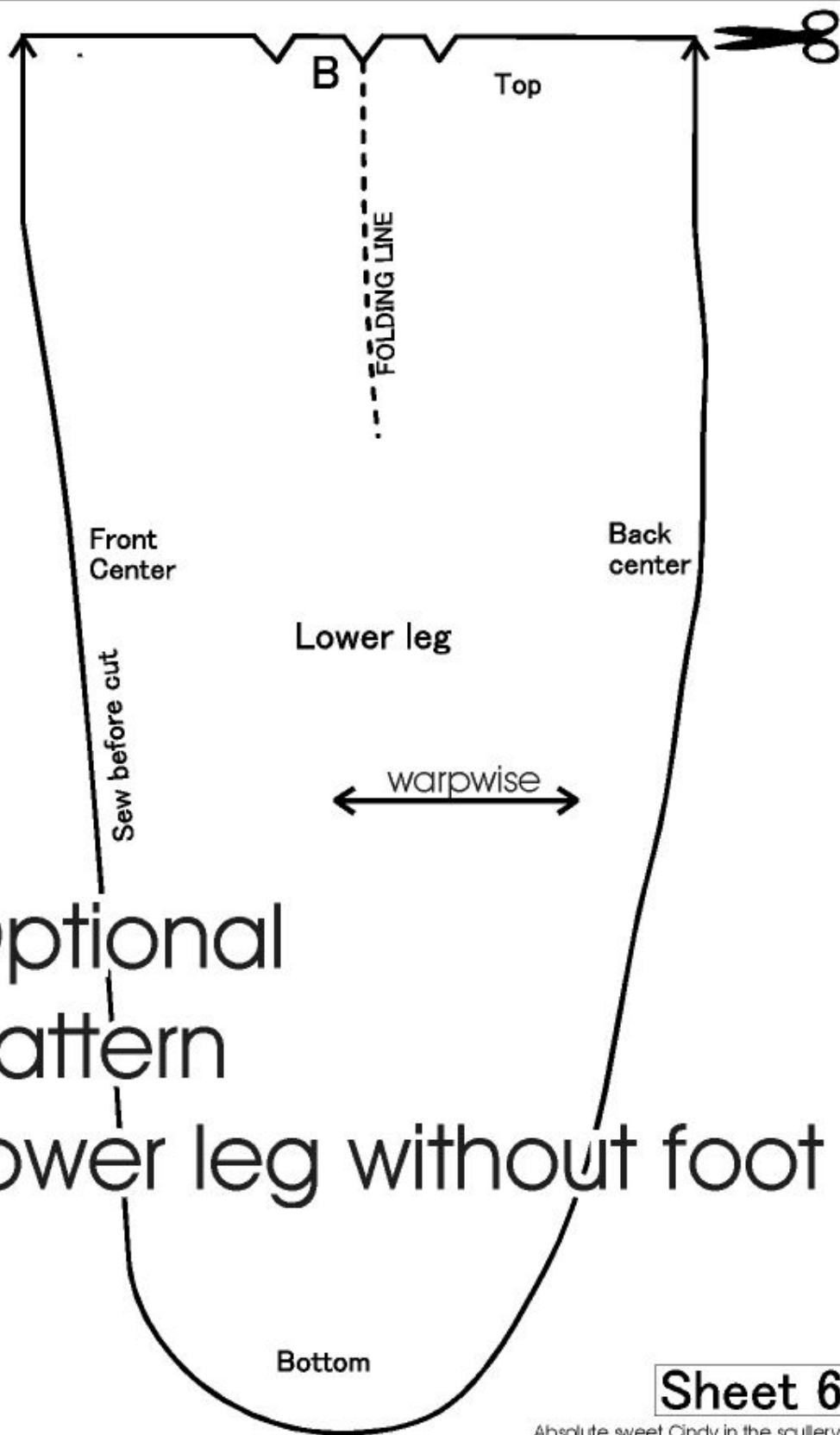


Optional
 pattern
 Hand with finger

Sheet 5

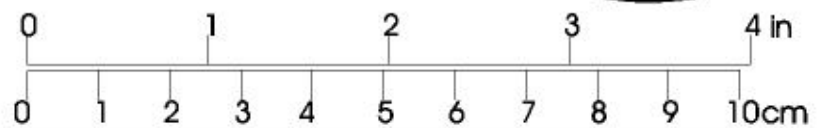


Absolute sweet Cindy in the scullery
 Soft cloth doll DMX-80
 Copy right 2004 by Doku (doku@newon.org)
 See below for license of this pattern
www.newon.org/doku/hobby/scd/license.html

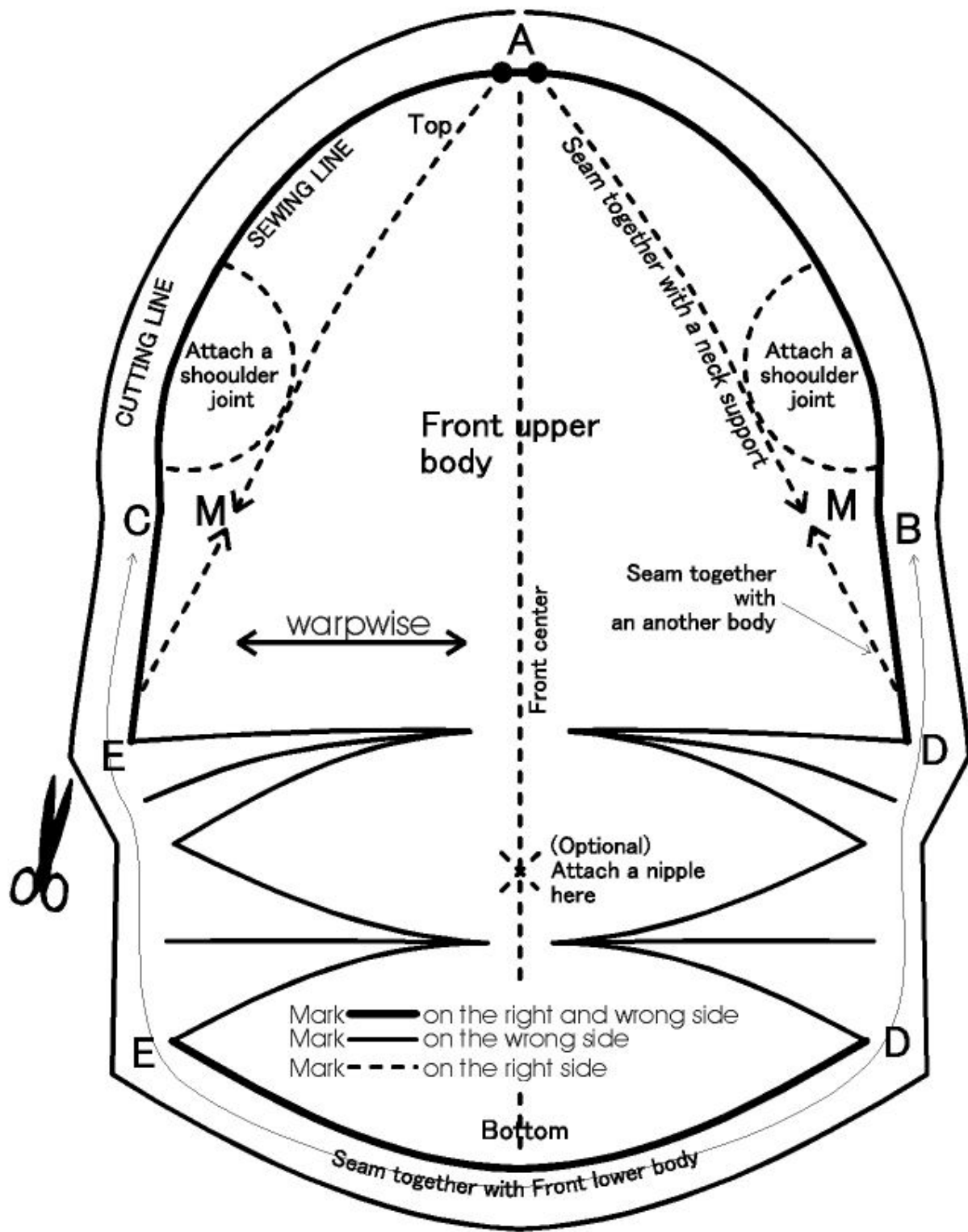


Optional
 pattern
 Lower leg without foot

Sheet 6

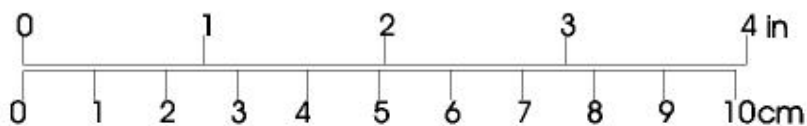


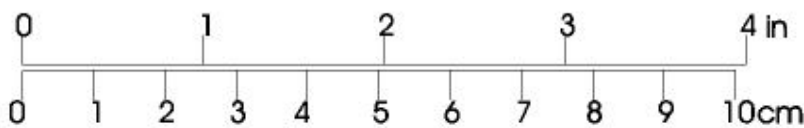
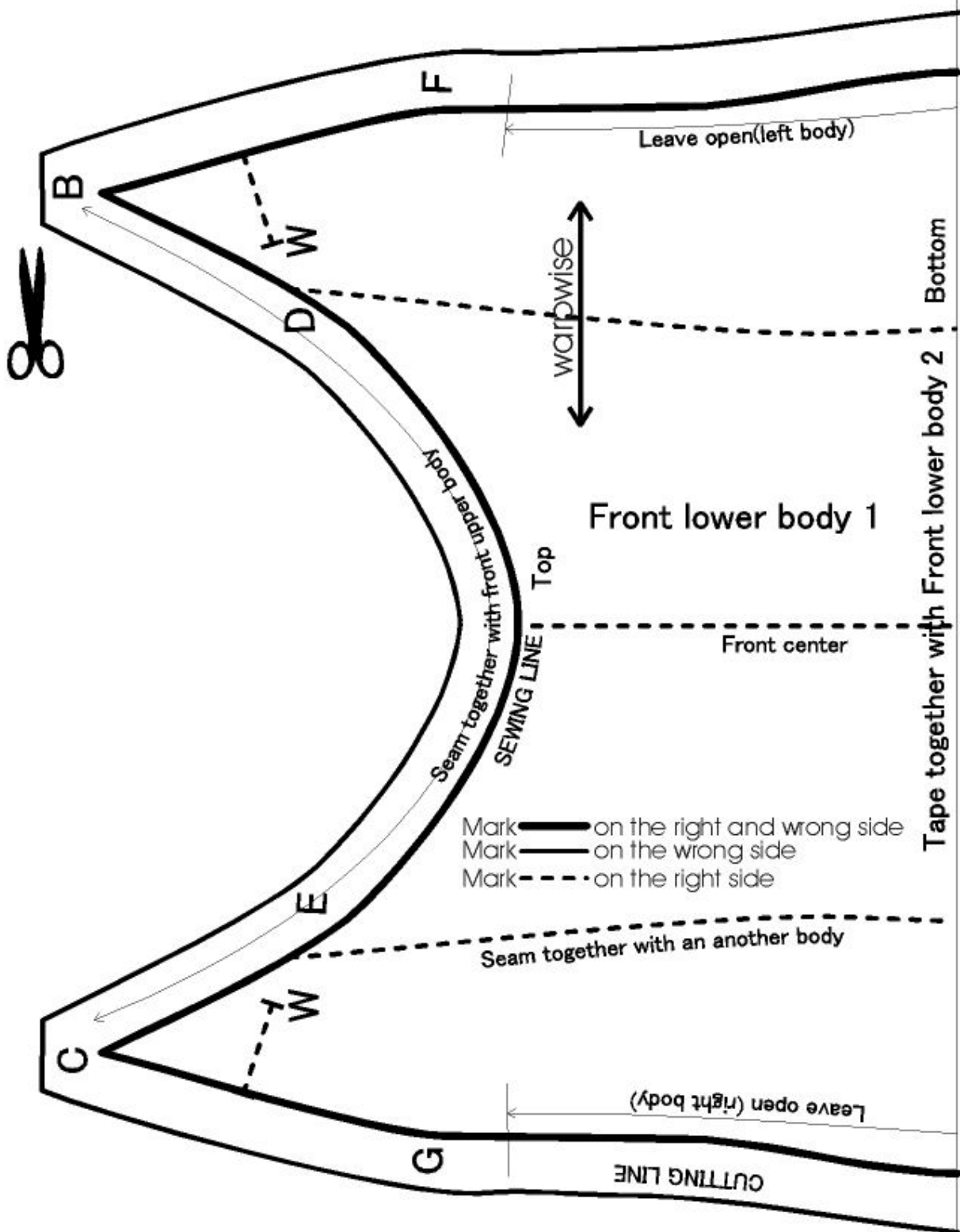
Absolute sweet Cindy in the scullery
 Soft cloth doll DMX-80
 Copy right 2004 by Doku (doku@newon.org)
 See below for license of this pattern
www.newon.org/doku/hobby/scd/license.html



Sheet 7

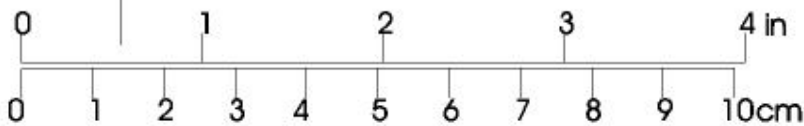
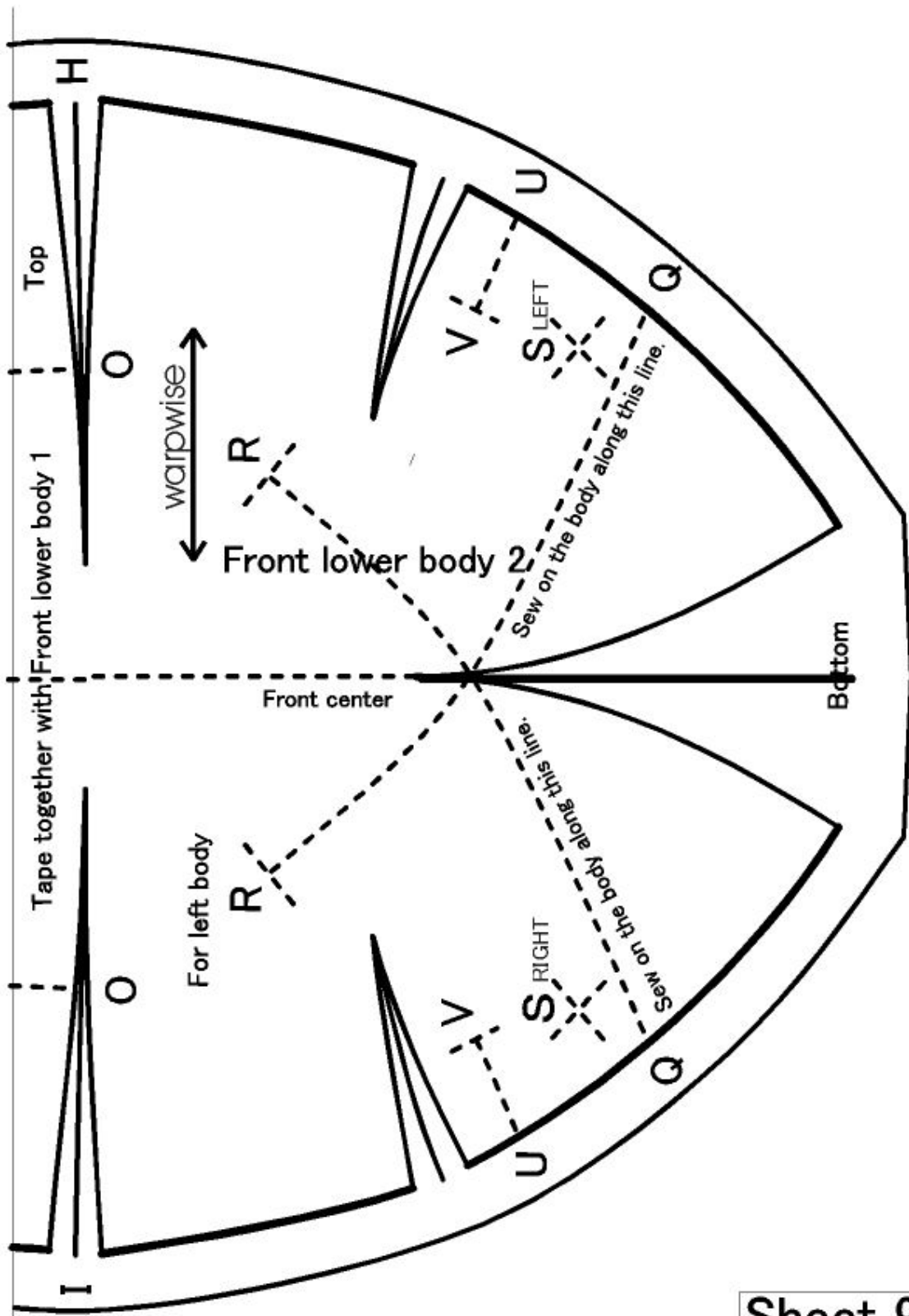
Absolute sweet Cindy in the scullery
 Soft cloth doll DMX-80
 Copy right 2004 by Doku (doku@newon.org)
 See below for license of this pattern
www.newon.org/doku/hobby/scd/license.html





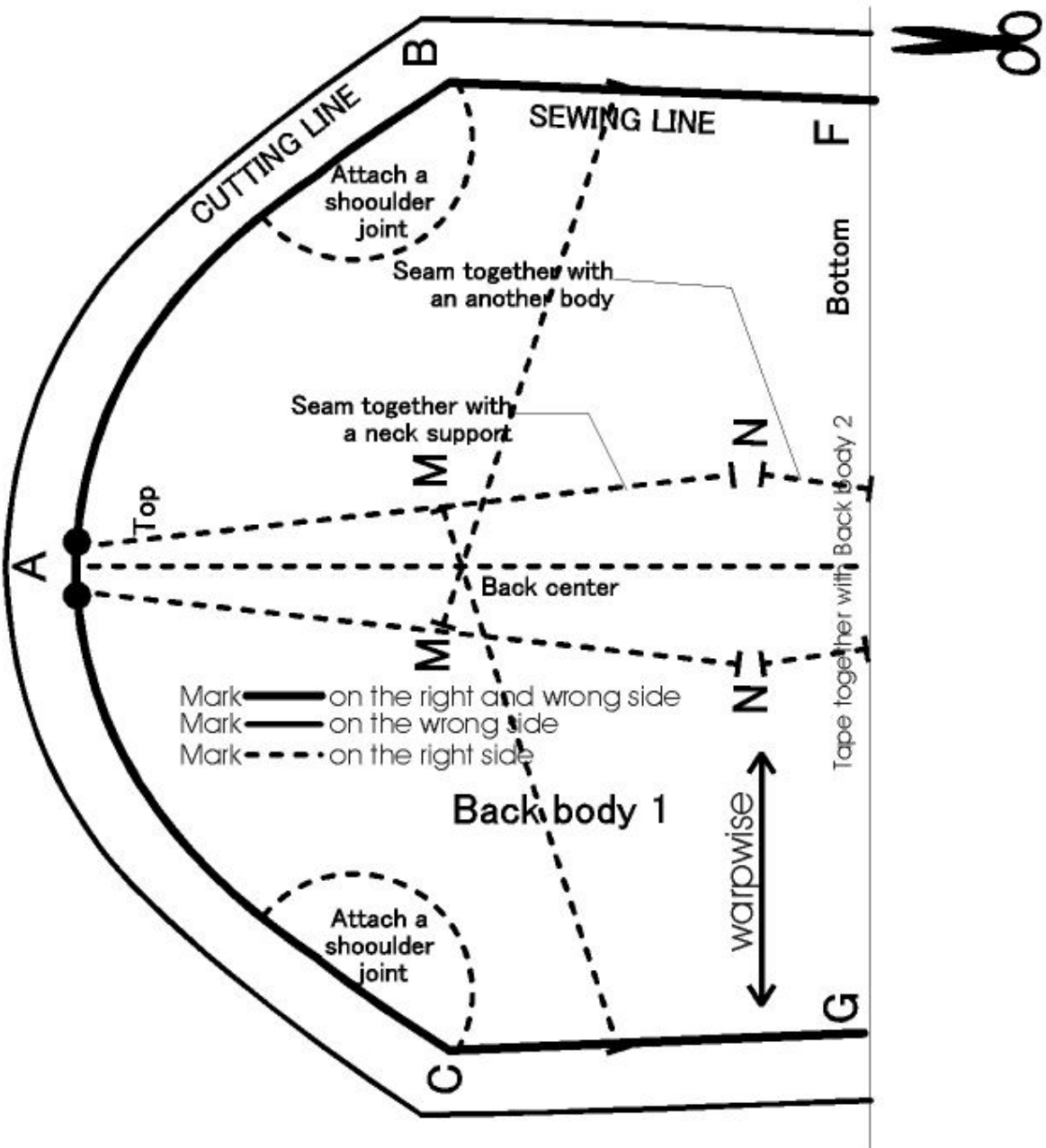
Sheet 8

Absolute sweet Cindy in the scullery
 Soft cloth doll DMX-80
 Copy right 2004 by Doku (doku@newon.org)
 See below for license of this pattern
www.newon.org/doku/hobby/sc.d/license.html

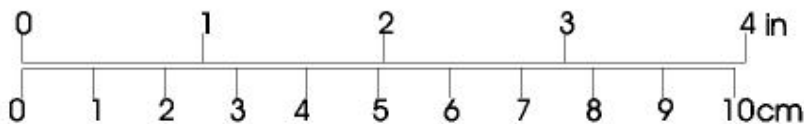


Sheet 9

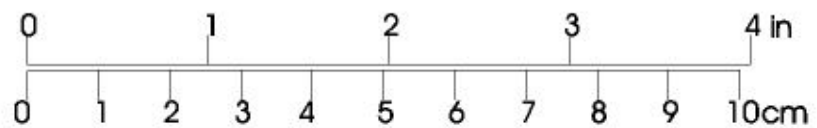
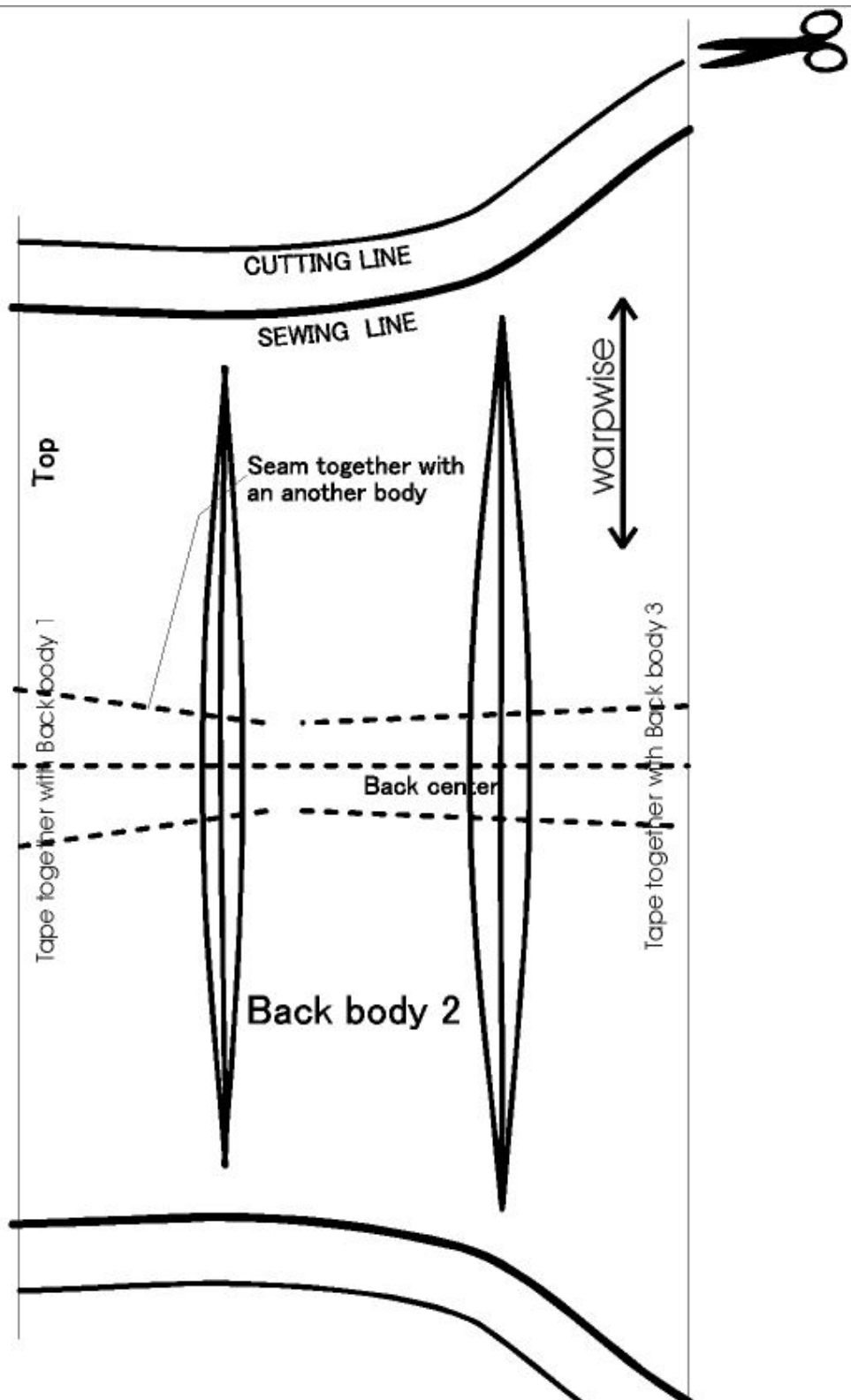
Absolute sweet Cindy in the scullery
 Soft cloth doll DMX-80
 Copy right 2004 by Doku (doku@newon.org)
 See below for license of this pattern
www.newon.org/doku/hobby/scd/license.html



Sheet 10

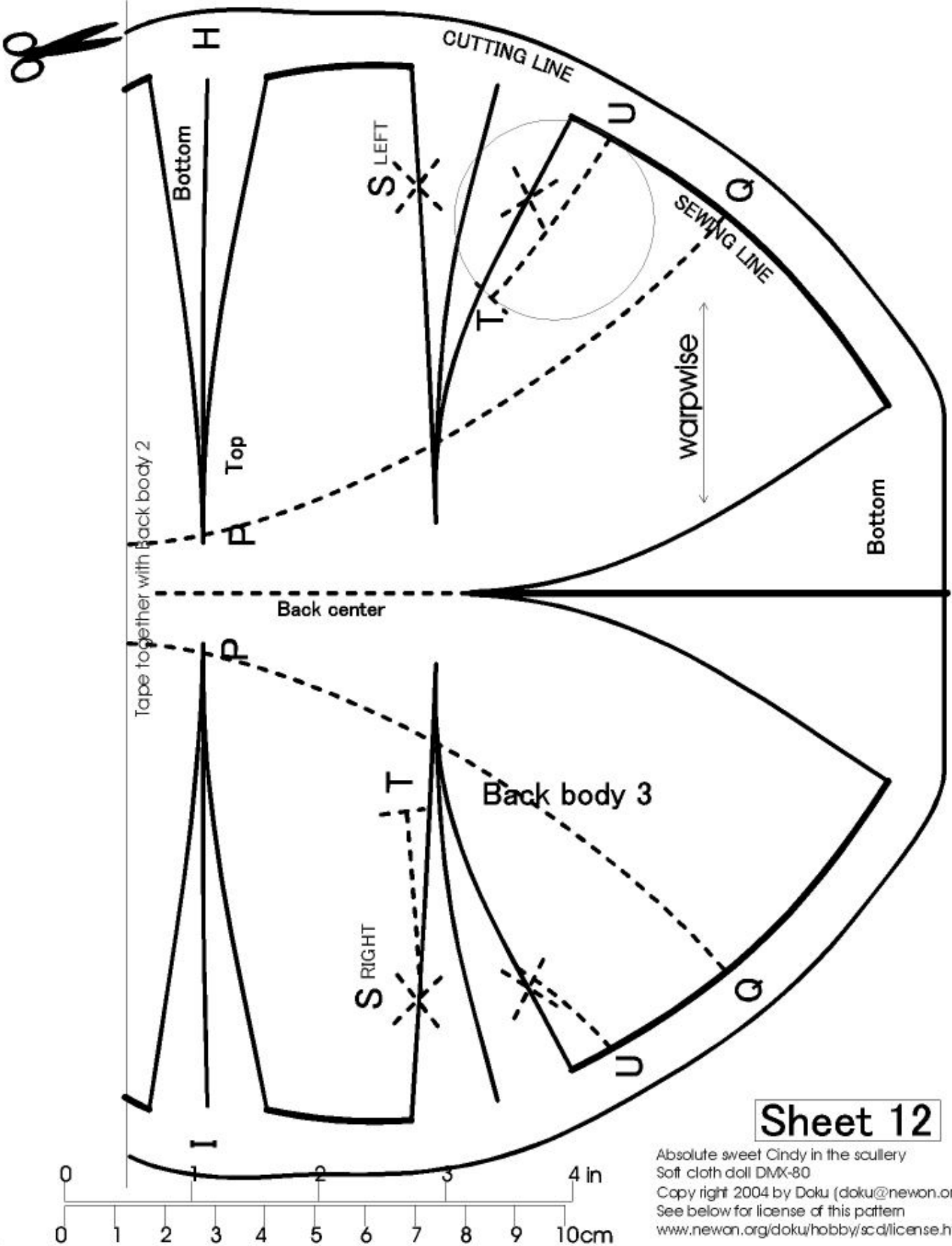


Absolute sweet Cindy in the scullery
 Soft cloth doll DMX-80
 Copy right 2004 by Doku (doku@newon.org)
 See below for license of this pattern
www.newon.org/doku/hobby/scd/license.html



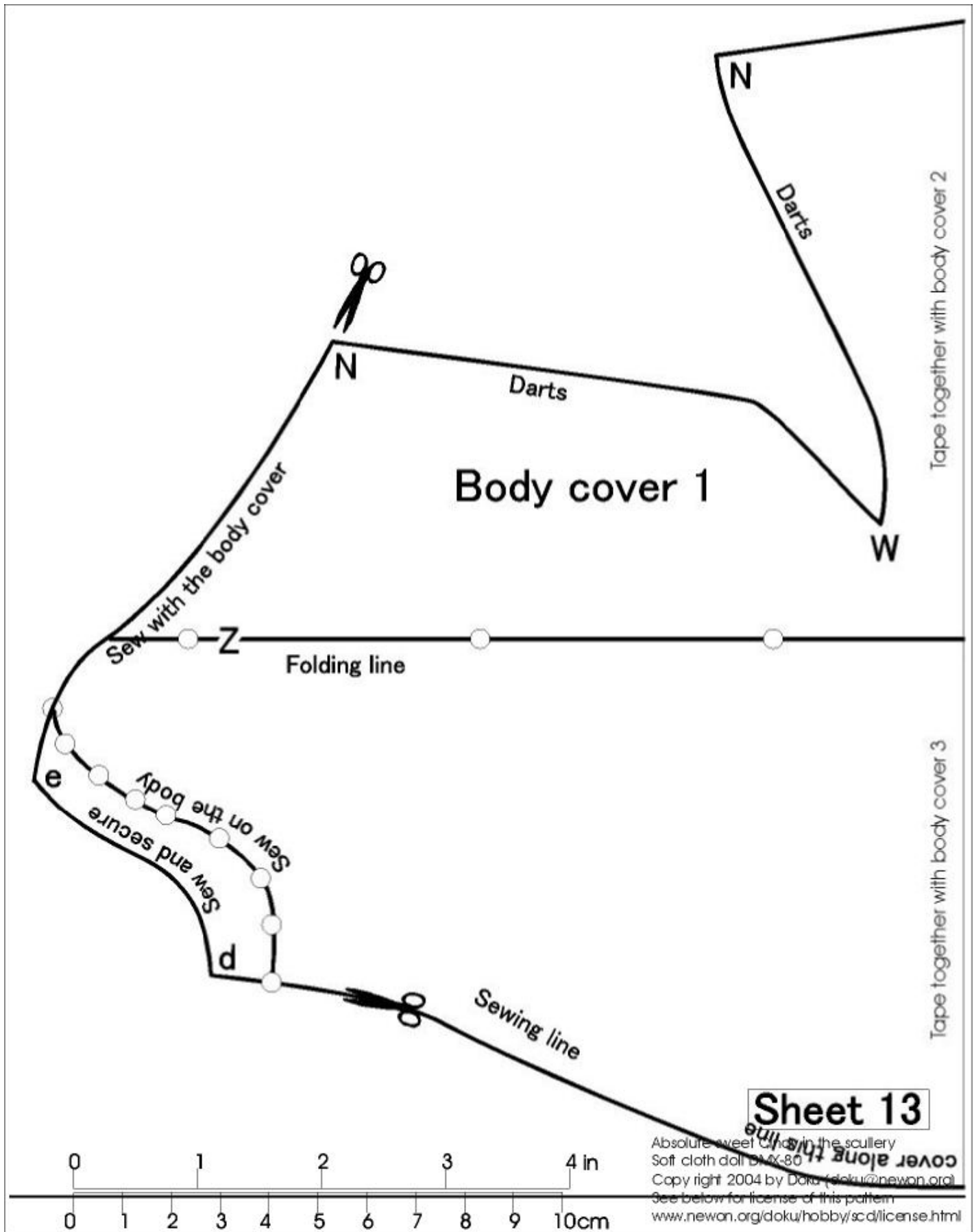
Sheet 11

Absolute sweet Cindy in the scullery
 Soft cloth doll DMX-80
 Copy right 2004 by Doku (doku@newon.org)
 See below for license of this pattern
www.newon.org/doku/hobby/scd/license.html



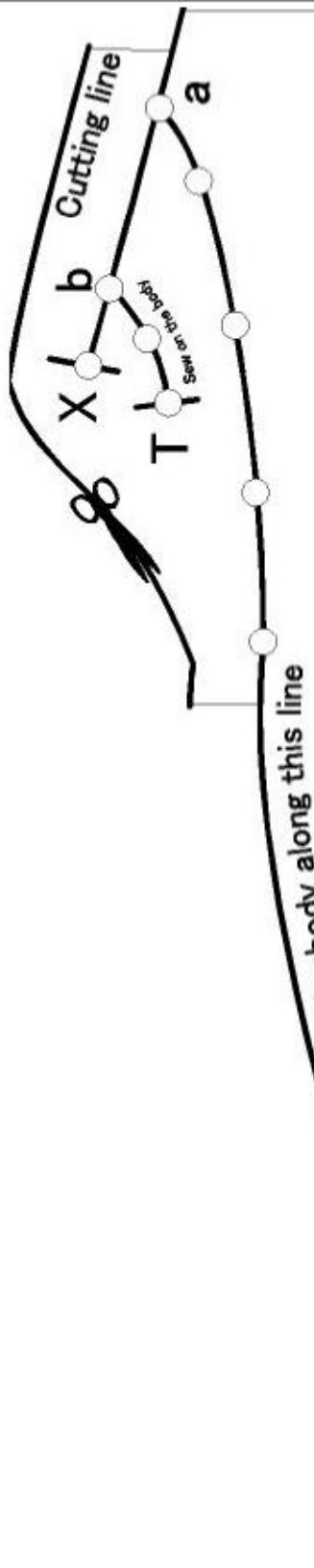
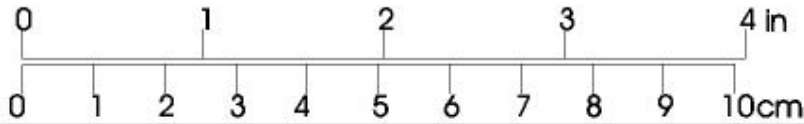
Sheet 12

Absolute sweet Cindy in the scullery
 Soft cloth doll DMX-80
 Copy right 2004 by Doku (doku@newon.org)
 See below for license of this pattern
www.newon.org/doku/hobby/scd/license.html



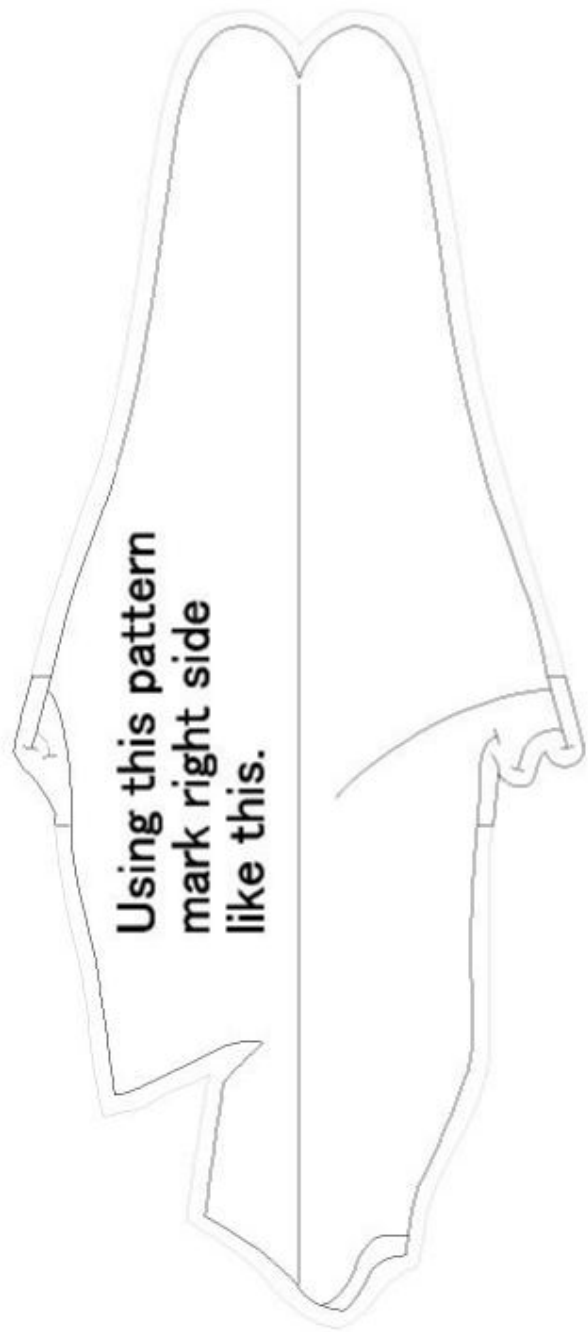
Sheet 13

Absolute sweet and in the scullery
 Soft cloth doll 014X-80
 Copy right 2004 by Doku (doku@newon.org)
 See below for license of this pattern
www.newon.org/doku/hobby/scd/license.html



Body cover 2

Tape together with body cover 4



Tape together with body cover 1

Tape together with body cover 3

Cutting line

Sheet 14

Absolute sweet Cindy in the scullery
 Soft cloth doll DMX-80
 Copy right 2004 by Doku (doku@newon.org)
 See below for license of this pattern
www.newon.org/doku/hobby/scd/license.html

Folding line

Tape together with body cover 2

Body cover 3

Hole at the center of the all round mark (○) on the line.
 Put this pattern on the fabric and insert the tip of marker in the all holes to mark dots.
 After Removing this pattern, joint the marked dots as written on this pattern.

Tape together with body cover 1

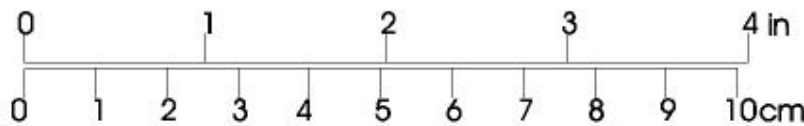
Tape together with body cover 5

Sew together with the body along this line

Sew with the body

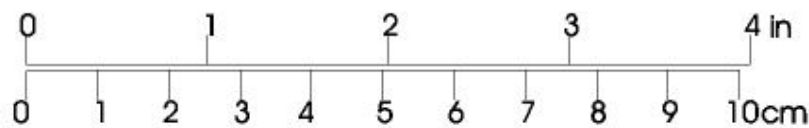
Cutting line

Sew together with the another body

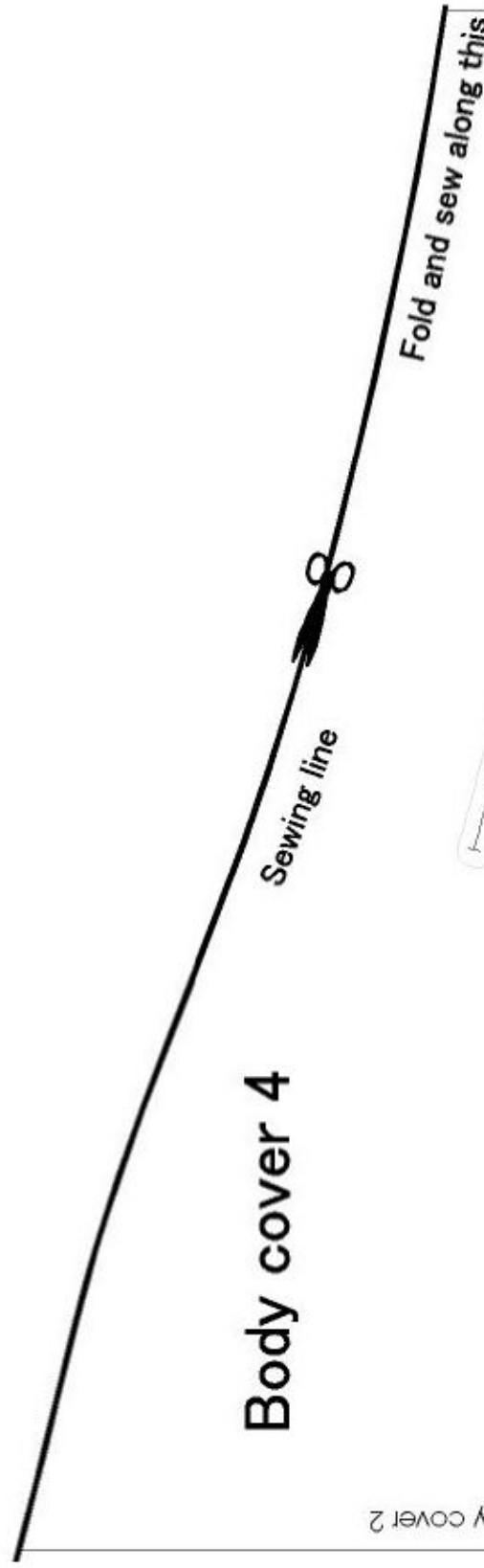


Sheet 15

Absolute sweet Cindy in the scullery
 Soft cloth doll DMX-80
 Copy right 2004 by Doku (doku@newon.org)
 See below for license of this pattern
www.newon.org/doku/hobby/scd/license.html

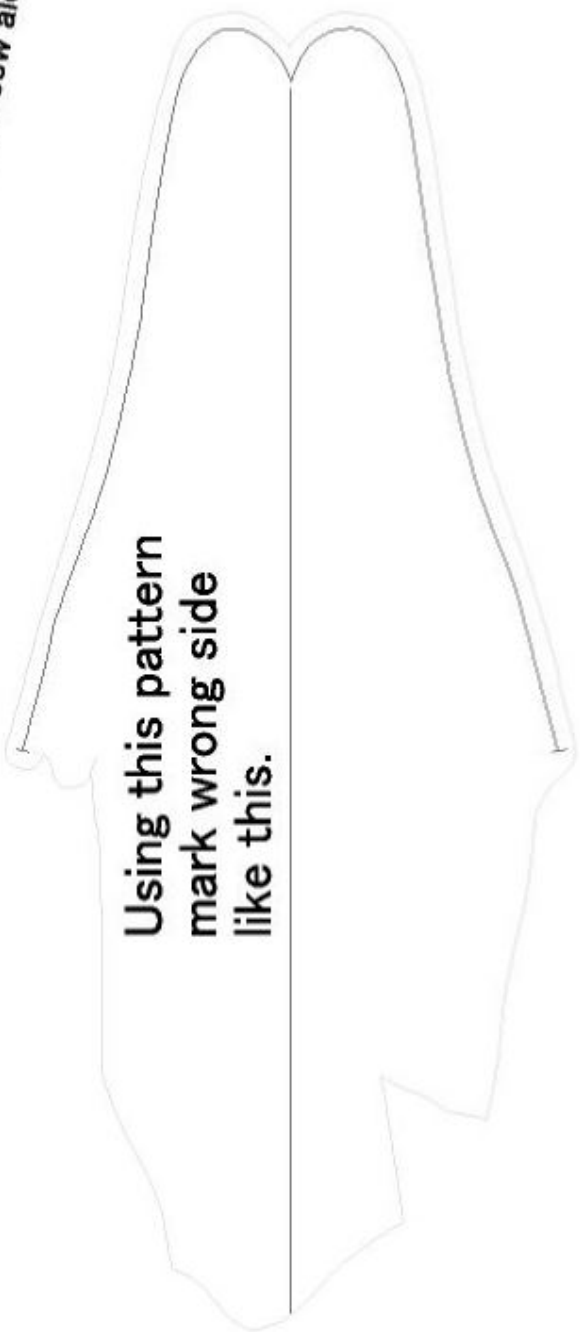


Body cover 4



Tape together with body cover 2

Using this pattern mark wrong side like this.



Tape together with body bover 5

Sheet 16

Absolute sweet Cindy in the scullery
 Soft cloth doll DMX-80
 Copy right 2004 by Doku (doku@newon.org)
 See below for license of this pattern
www.newon.org/doku/hobby/scd/license.html

Folding line

Tape together with body k

Body cover 5

Cut out two fabric pieces like this, adding 1cm seam allowance from fringe of pattern.. For 1st piece use right side of this pattern, and for 2nd piece use wrong side of this pattern.

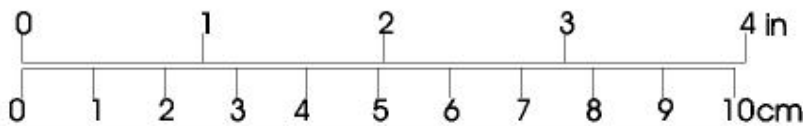
Fold and sew along this

Sewing line

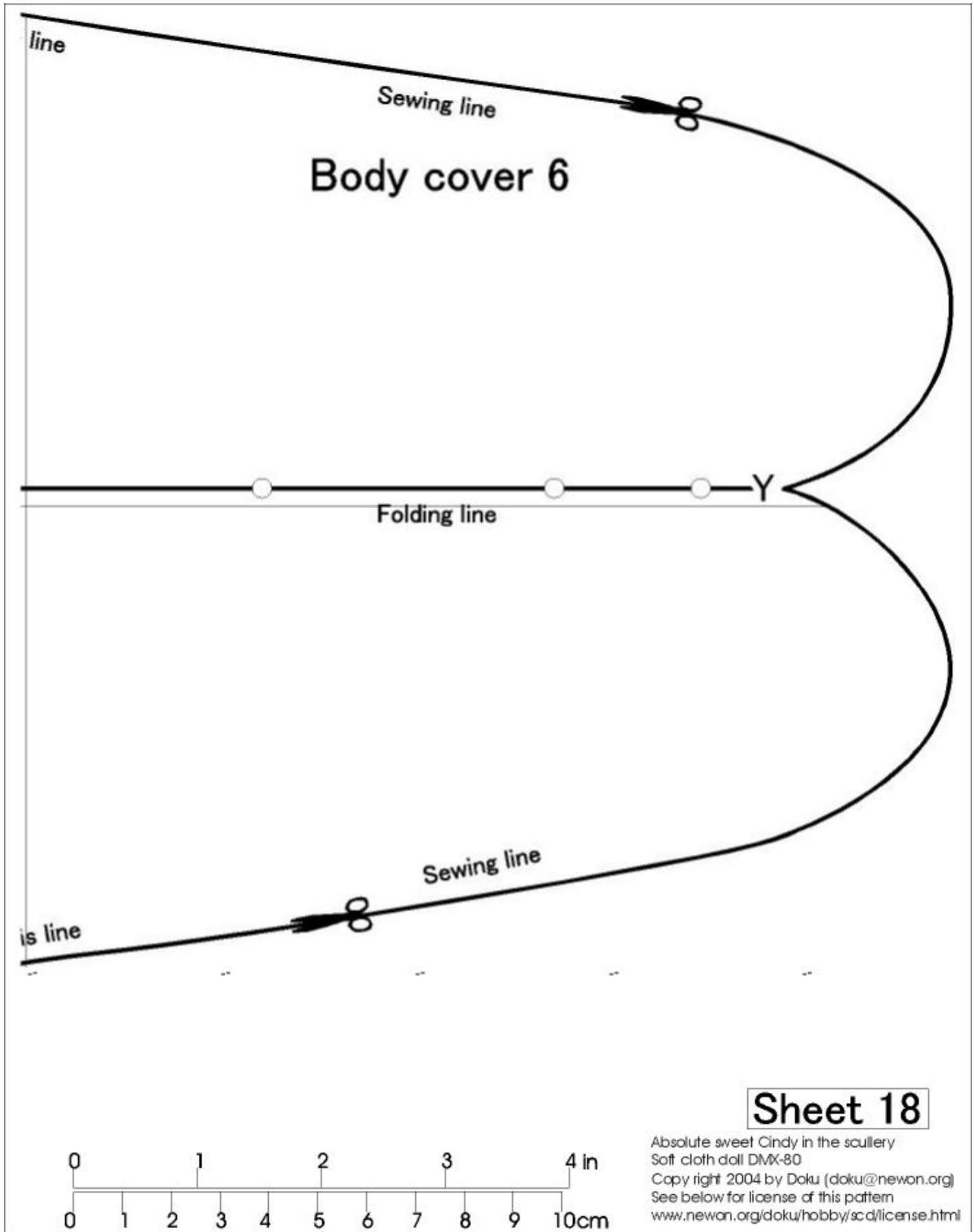


Tape together with body cover 3

Sheet 17

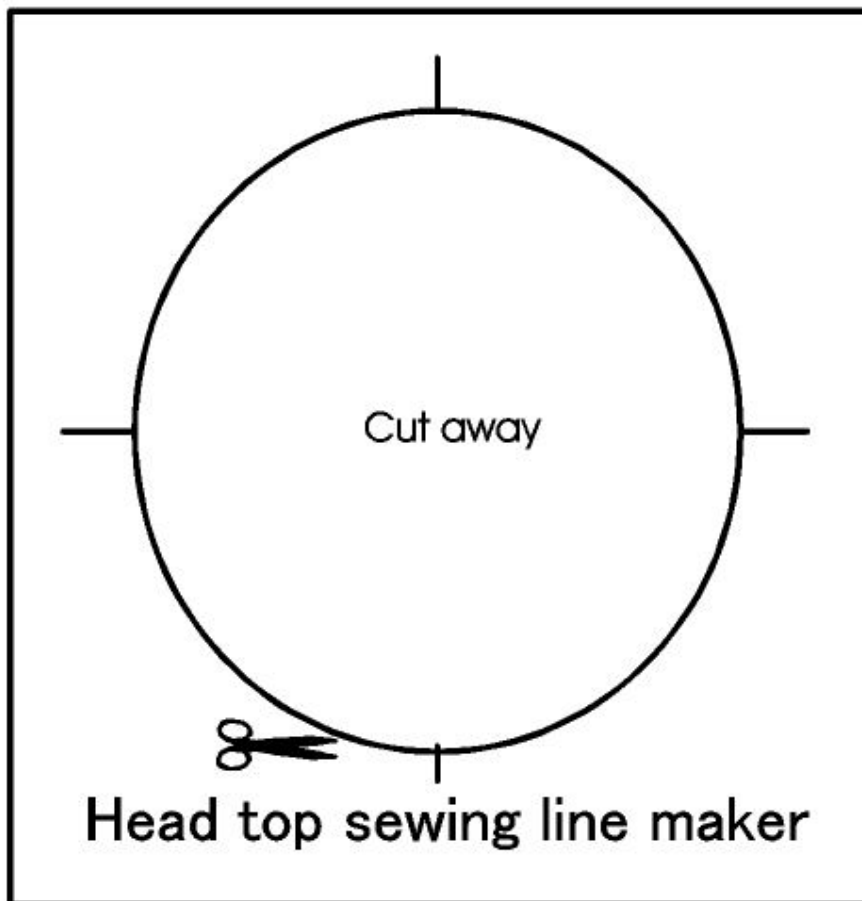
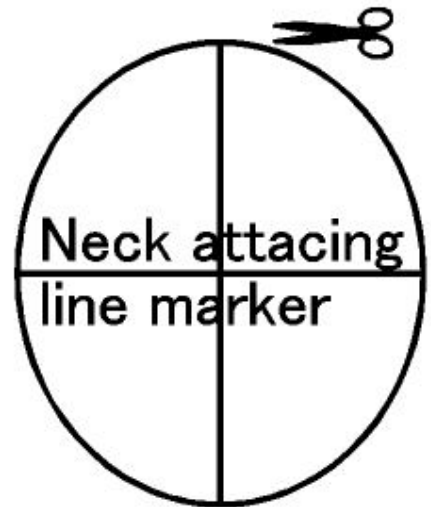


Absolute sweet Cindy in the scullery
 Soft cloth doll DMX-80
 Copy right 2004 by Doku (doku@newon.org)
 See below for license of this pattern
www.newon.org/doku/hobby/scd/license.html



Sheet 18

Absolute sweet Cindy in the scullery
 Soft cloth doll DMX-80
 Copy right 2004 by Doku (doku@newon.org)
 See below for license of this pattern
www.newon.org/doku/hobby/scd/license.html



ABSOLUTE

Sweet
Cindy

Director Maihime's message

子供は求めています、
親と、心ゆくまで話し合える時間を。
それは、長い人生の中においては、
わずかな時間かもしれませんが、
しかし、その子供にとっては、
「永遠の時間」になります。

Designer Doku's message

「自分の作った人形」や「自分のため
にが作ってもらった人形」が与える癒
しに「買ってきた人形」は勝ることは
出来ないと思えます。

これは、絶滅寸前の「手作り」に残さ
れた最後の聖域であり、大量生産の商
品で窒息しそうな私たちが、ぜひ、思
い出さなくてはならない感覚だと思
うのです。

お金に依存して、沢山の商品で身の回
りを埋め尽くす生き方を考え直し、質
素でも、心のこもった品物を大切に
使いながら、やさしく、正直に暮ら
したいと思うのです。

Sheet 19

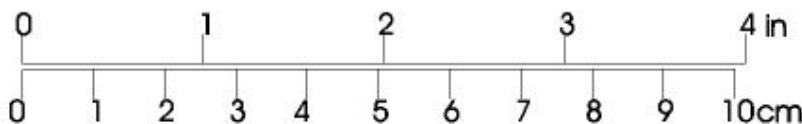
Absolute sweet Cindy in the scullery




Soft cloth doll DMX-80

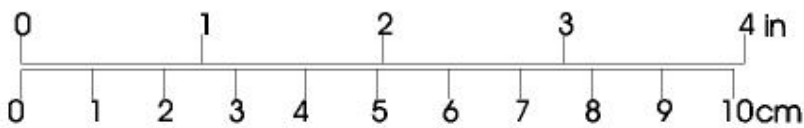
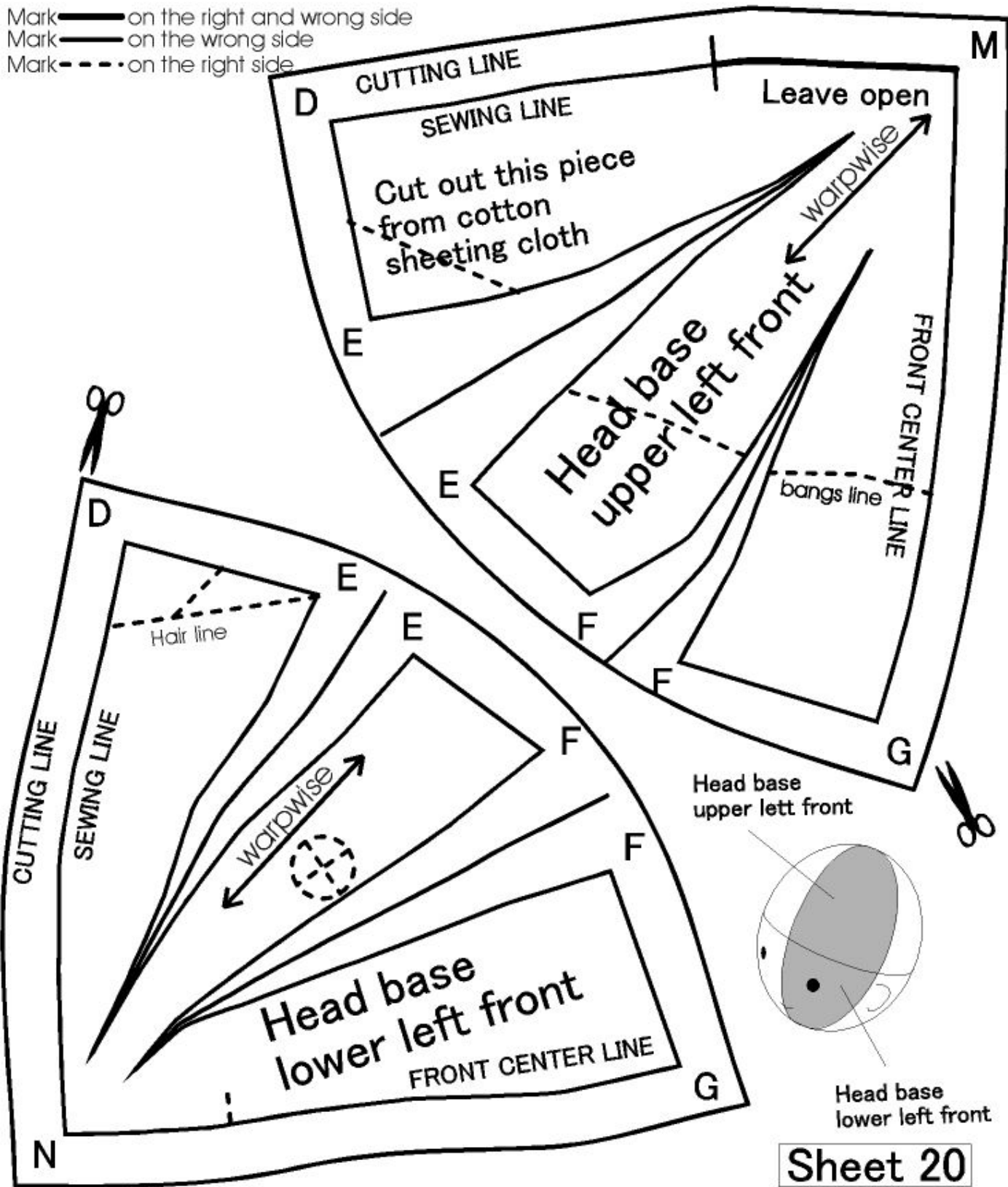
Copy right 2004 by Doku (doku@newon.org)

See below for license of this pattern

www.newon.org/doku/hobby/scd/license.html

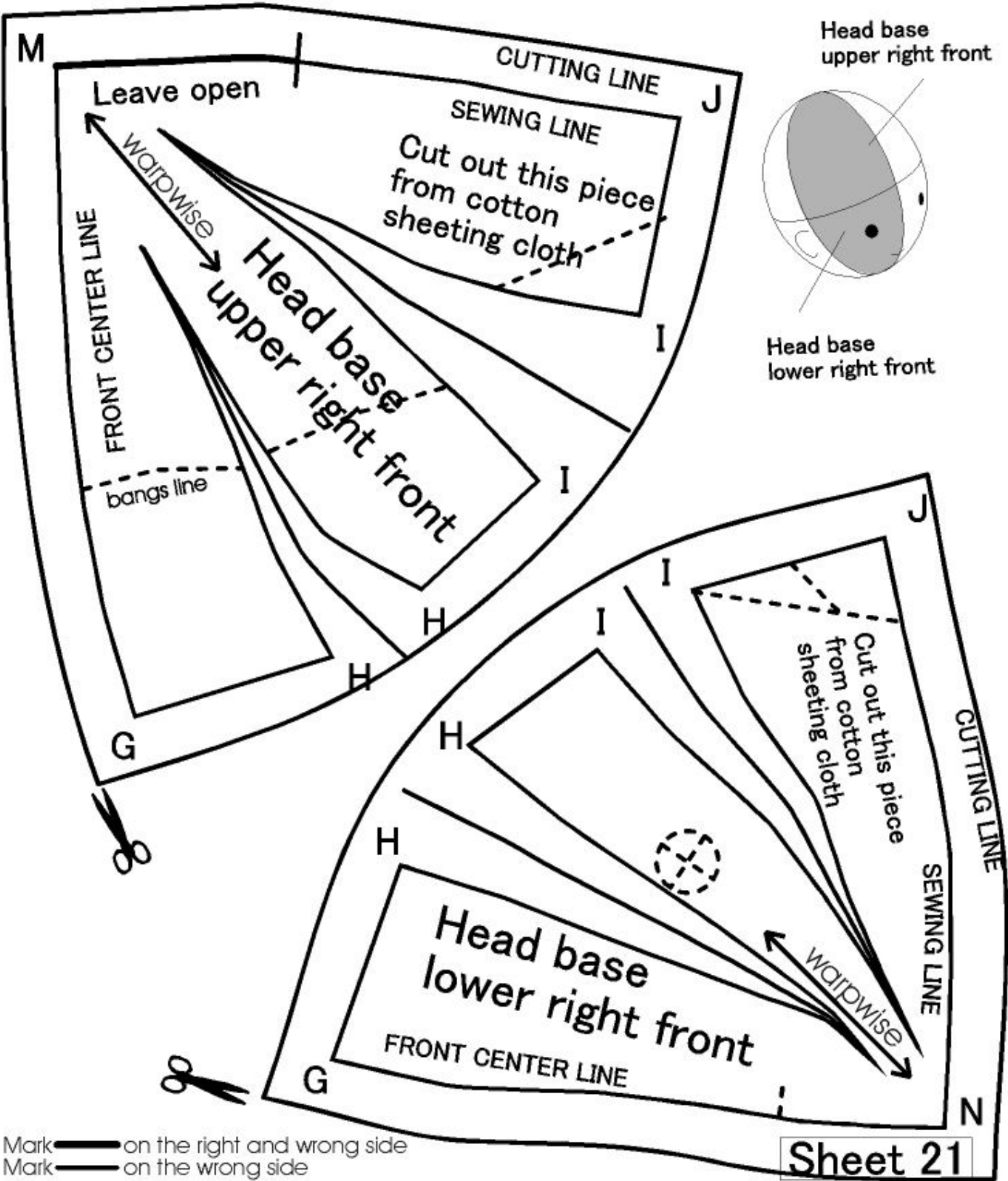


Mark  on the right and wrong side
 Mark  on the wrong side
 Mark  on the right side

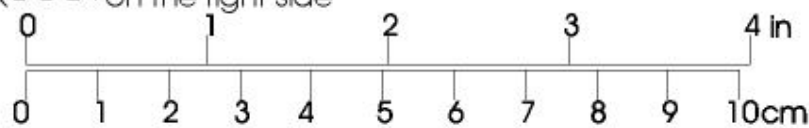


Sheet 20

Absolute sweet Cindy in the scullery
 Soft cloth doll DMX-80
 Copy right 2004 by Doku (doku@newon.org)
 See below for license of this pattern
www.newon.org/doku/hobby/scd/license.html



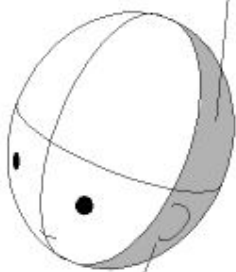
- Mark on the right and wrong side
- Mark on the wrong side
- Mark on the right side



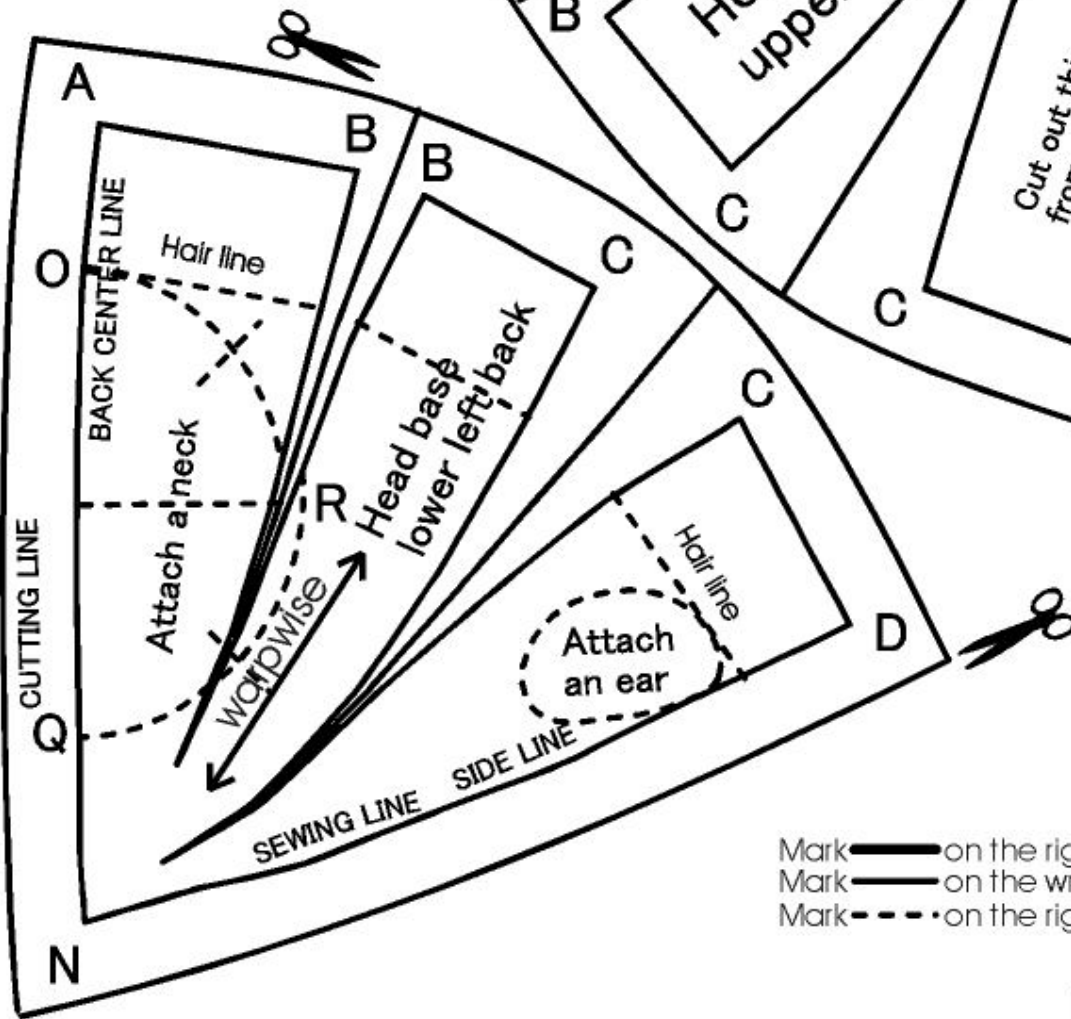
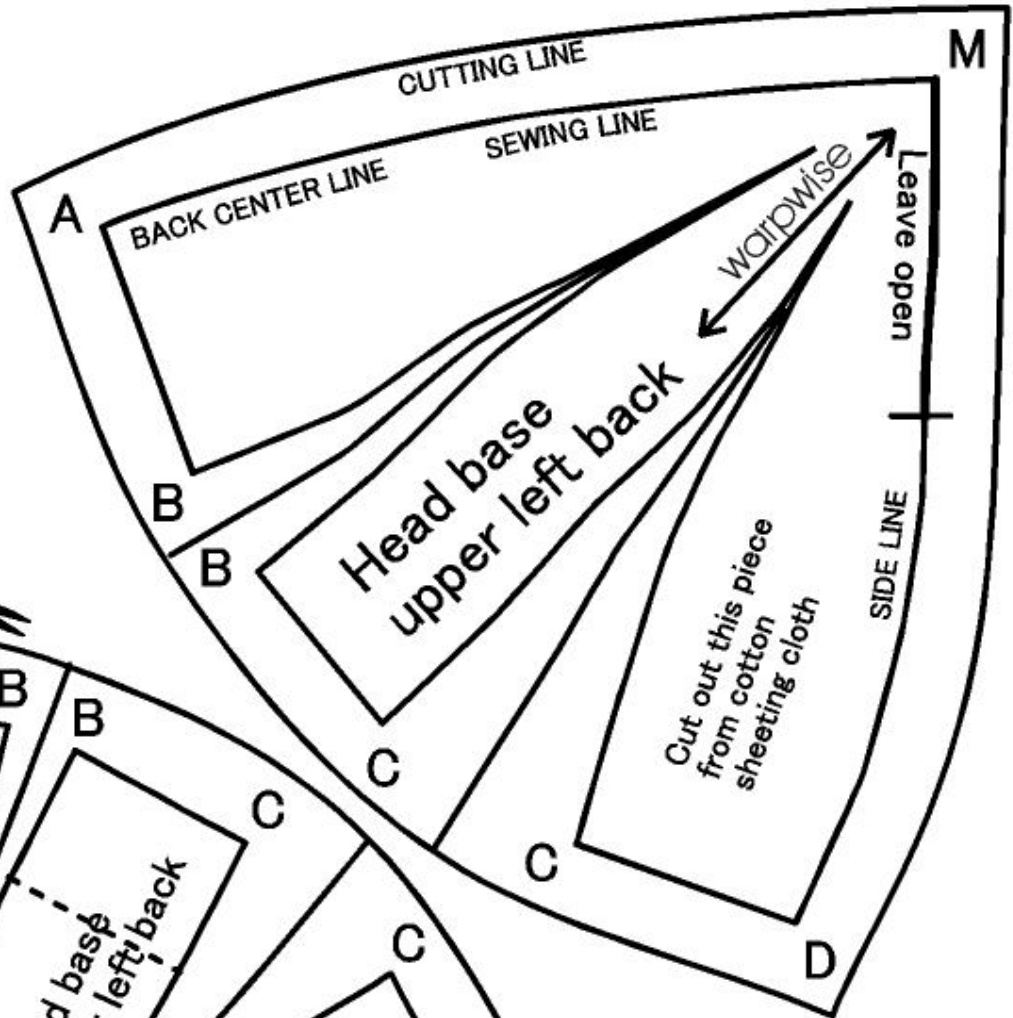
Sheet 21




Absolute sweet Cindy in the scullery
 Soft cloth doll DMX-80
 Copy right 2004 by Doku (doku@newon.org)
 See below for license of this pattern
www.newon.org/doku/hobby/scd/license.html

Head base
upper left back



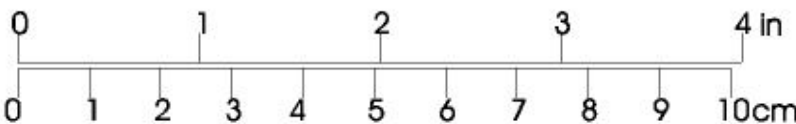
Head base
lower left back

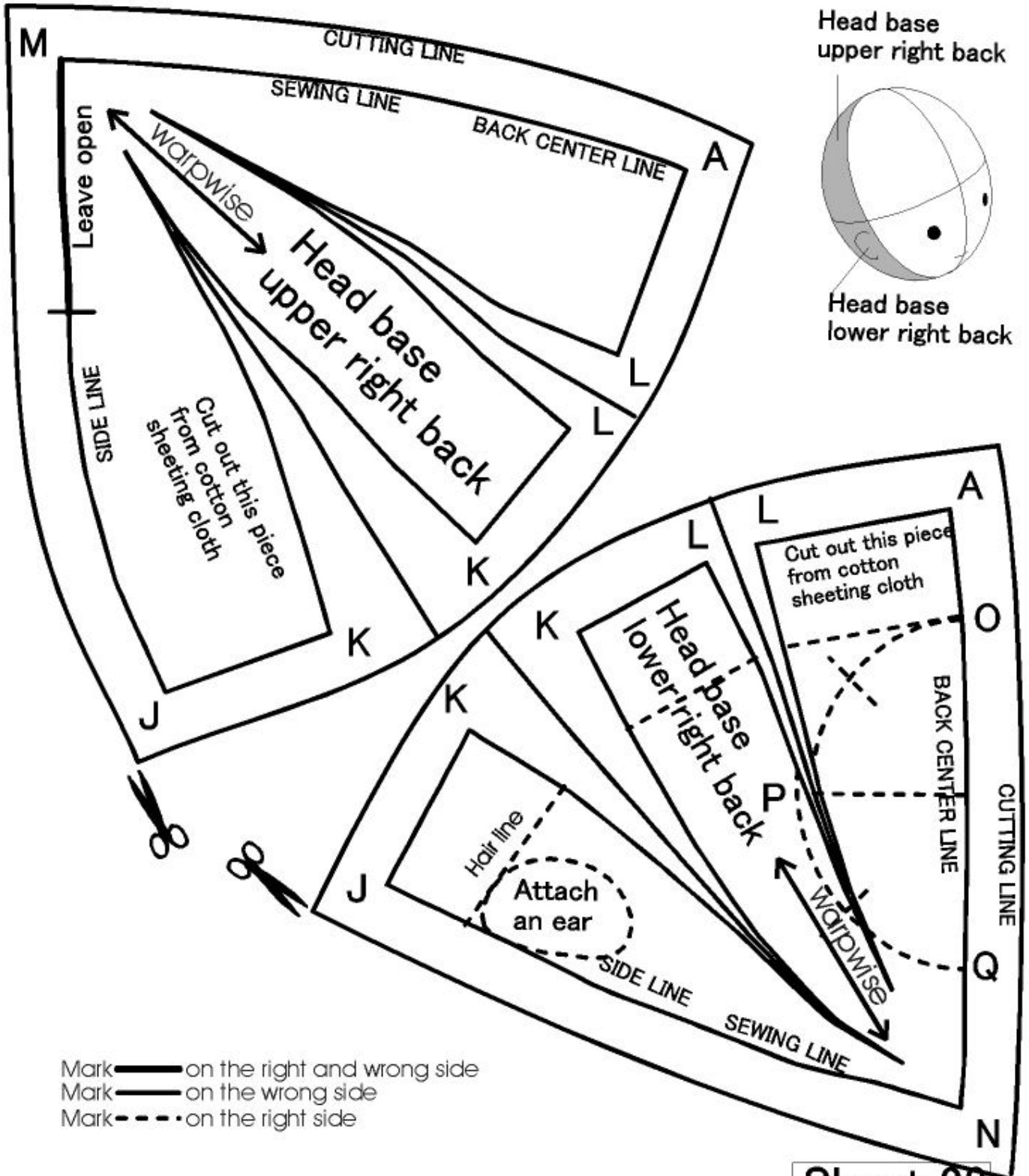


Mark  on the right and wrong side
 Mark  on the wrong side
 Mark  on the right side

Sheet 22

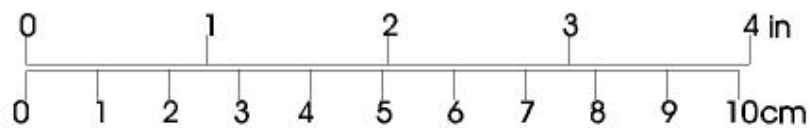
Absolute sweet Cindy in the scullery
 Soft cloth doll DMX-80
 Copy right 2004 by Doku (doku@newon.org)
 See below for license of this pattern
www.newon.org/doku/hobby/scd/license.html

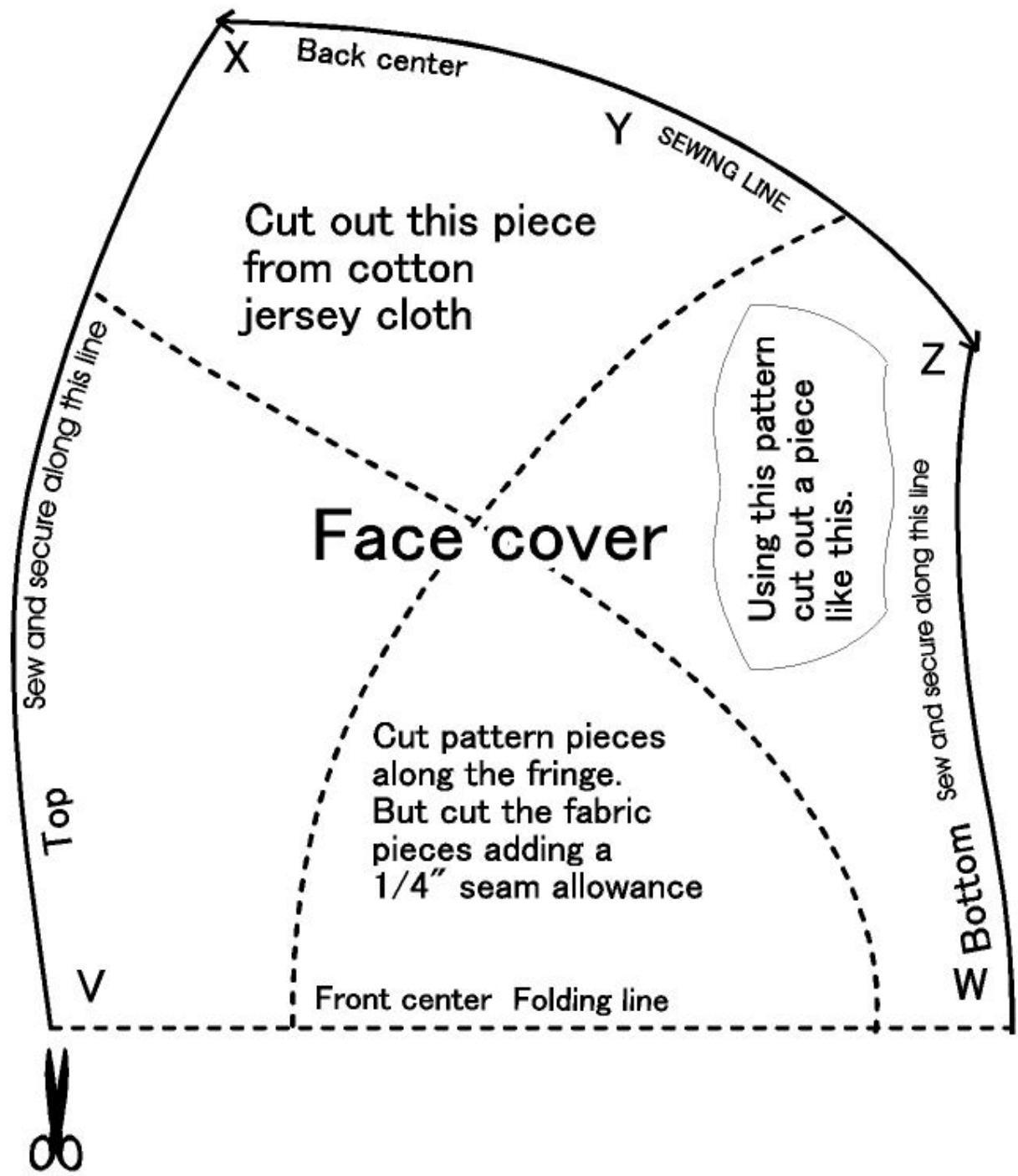




Sheet 23

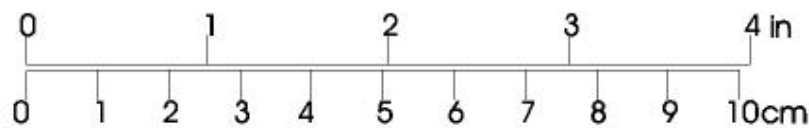
Absolute sweet Cindy in the scullery
 Soft cloth doll DMX-80
 Copy right 2004 by Doku (doku@newon.org)
 See below for license of this pattern
www.newon.org/doku/hobby/scd/license.html



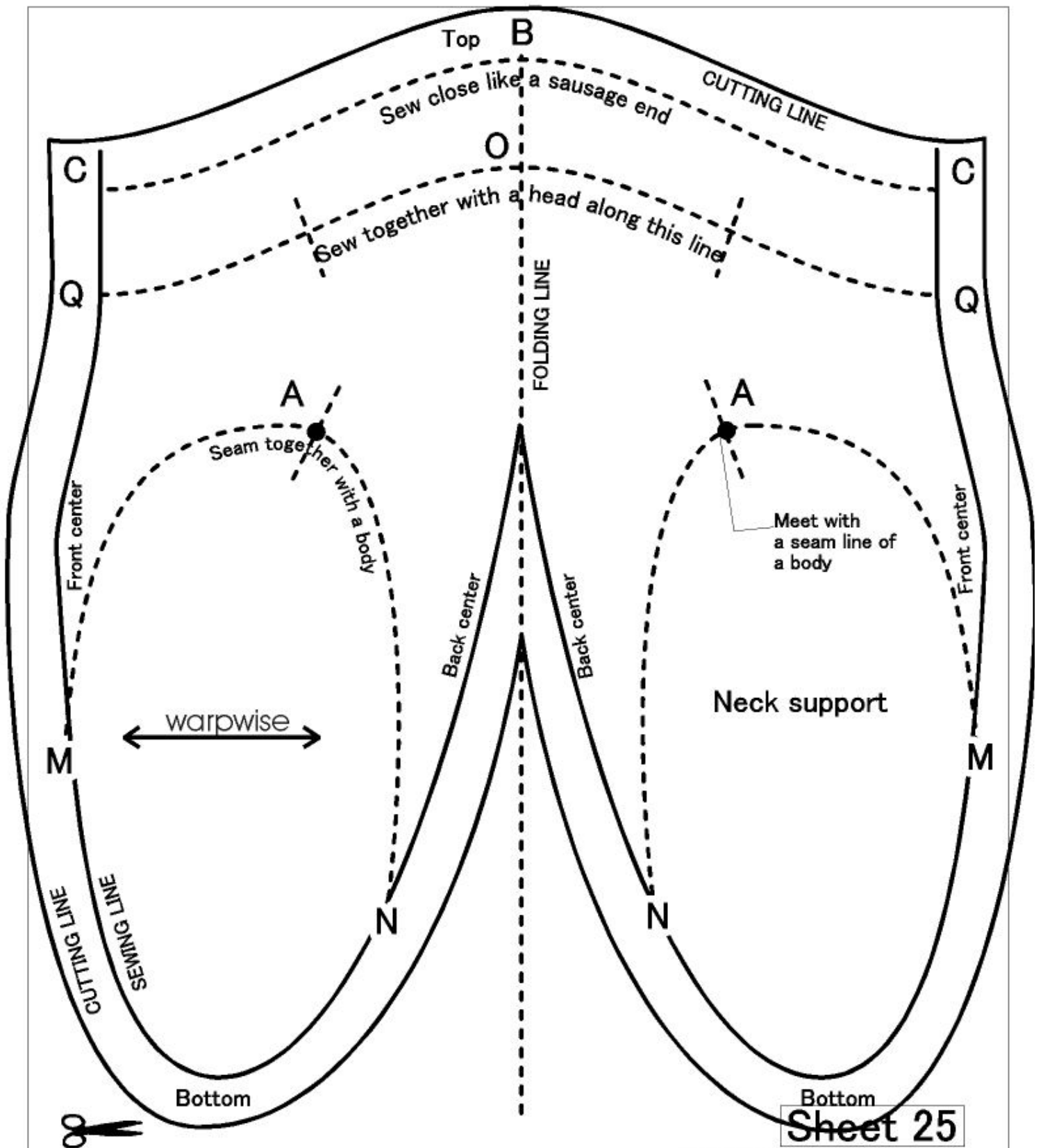


Face cover

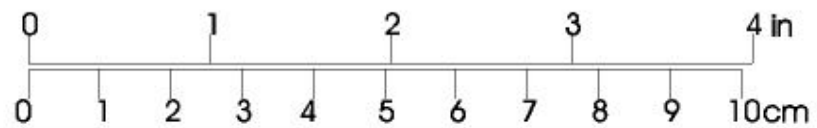
Sheet 24



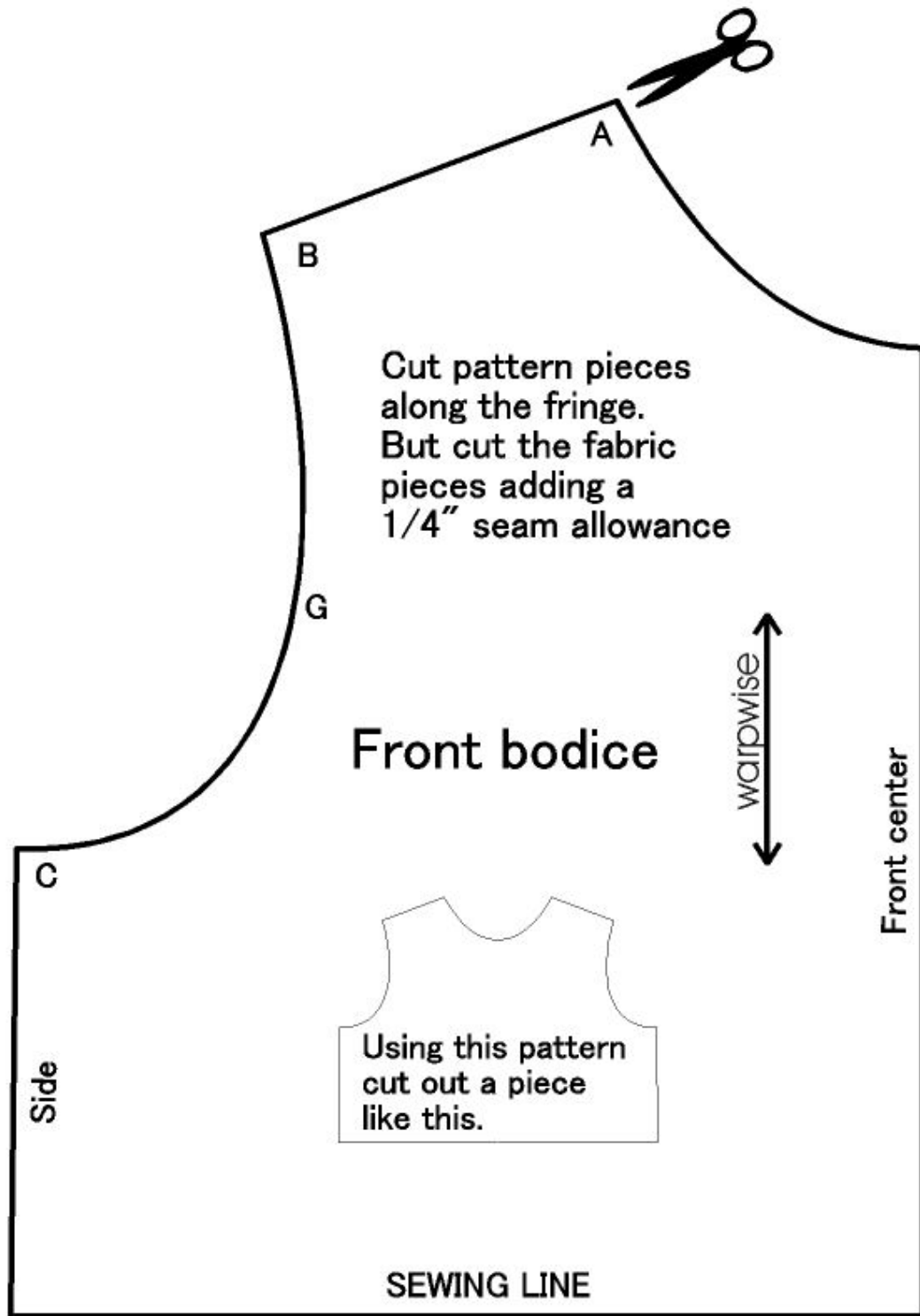
Absolute sweet Cindy in the scullery
 Soft cloth doll DMX-80
 Copy right 2004 by Doku (doku@newon.org)
 See below for license of this pattern
www.newon.org/doku/hobby/scd/license.html



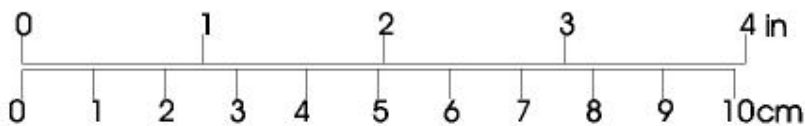
Sheet 25



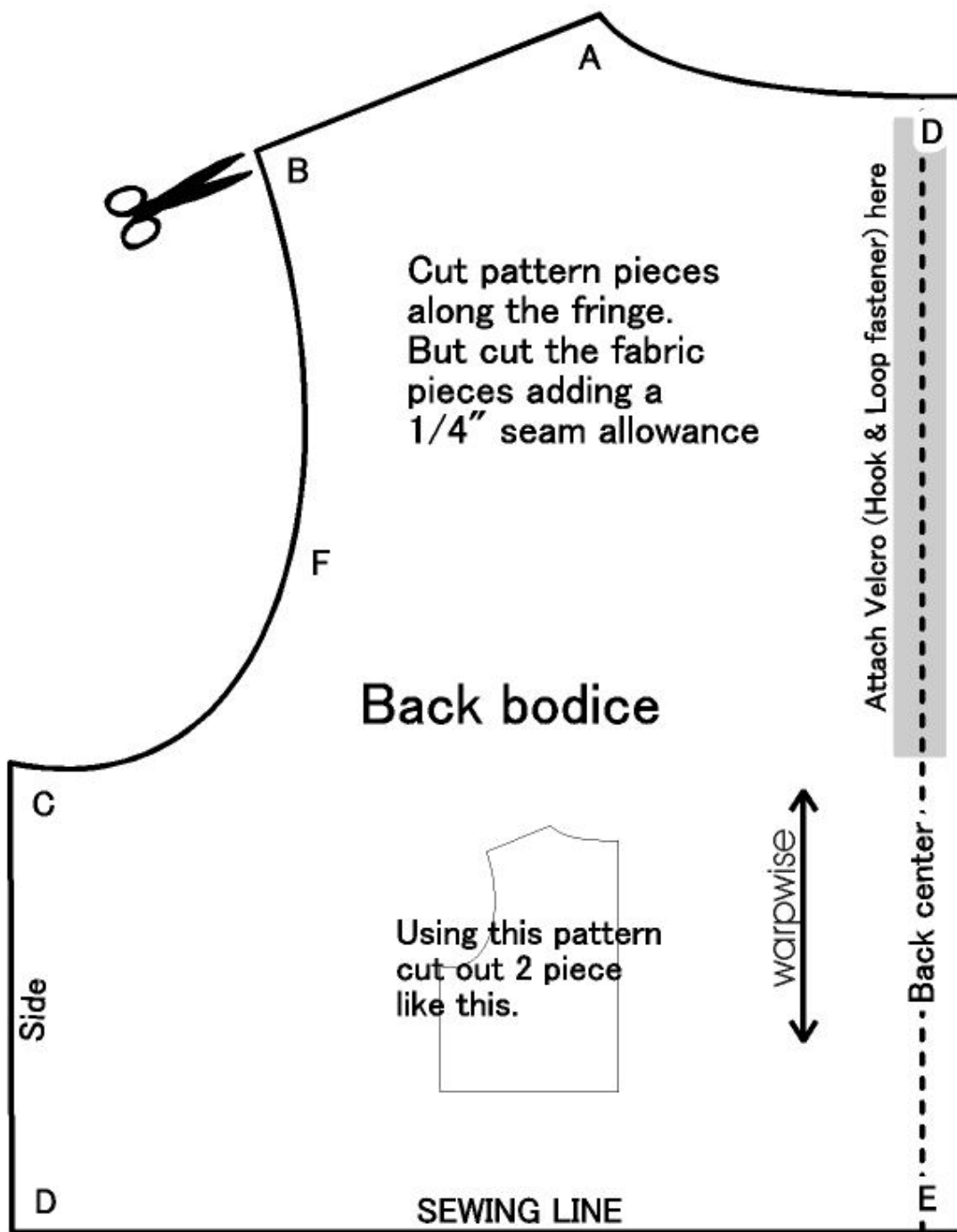
Absolute sweet Cindy in the scullery
 Soft cloth doll DMX-80
 Copy right 2004 by Daku (daku@newon.org)
 See below for license of this pattern
www.newon.org/doku/hobby/scd/license.html



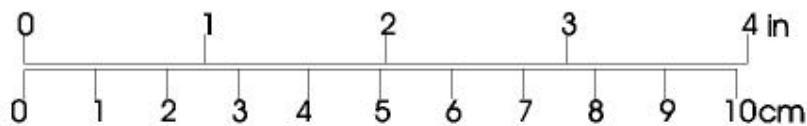
Sheet 26



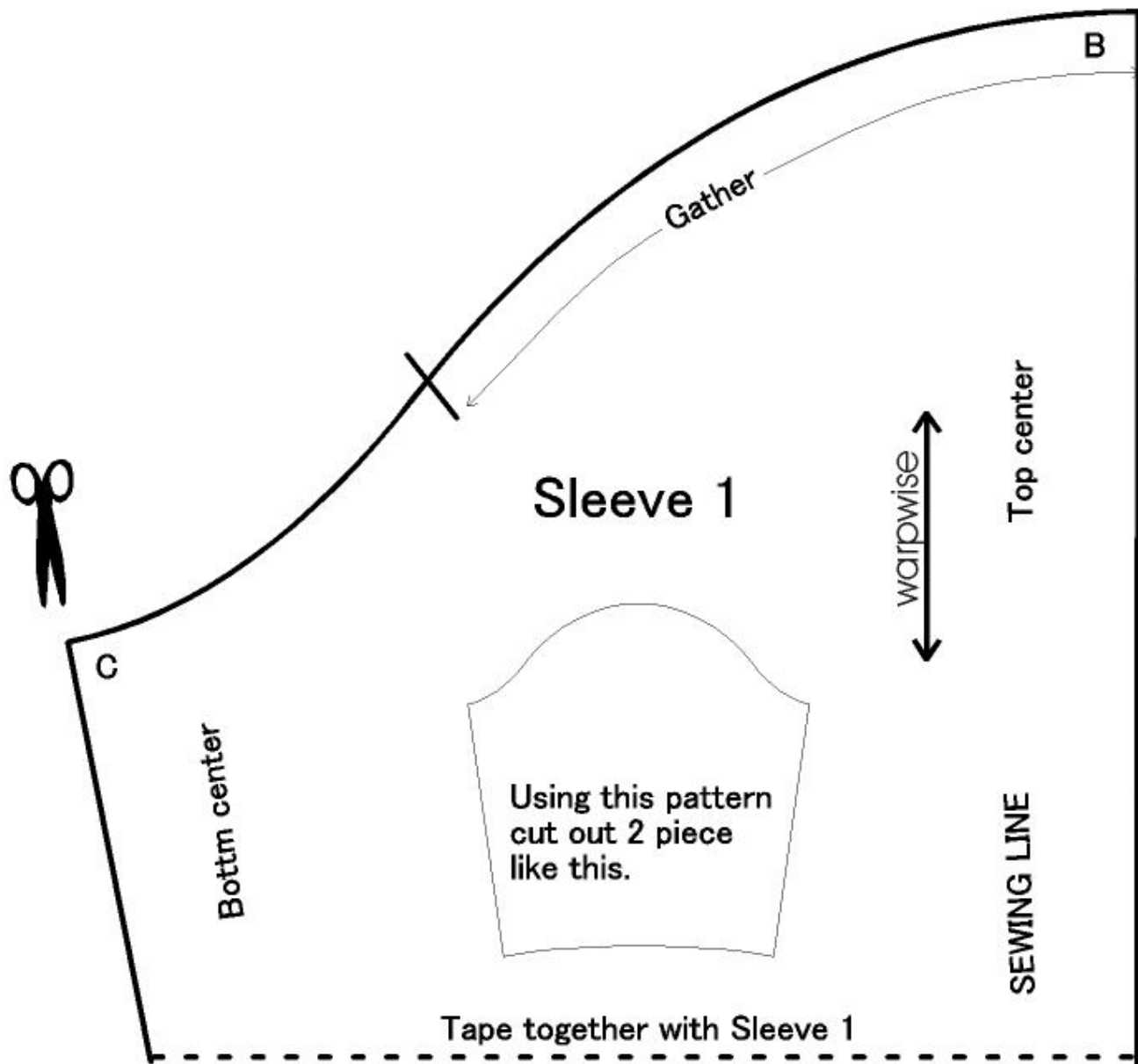
Absolute sweet Cindy in the scullery
Soft cloth doll DMX-80
Copy right 2004 by Doku (doku@newon.org)
See below for license of this pattern
www.newon.org/doku/hobby/scd/license.html



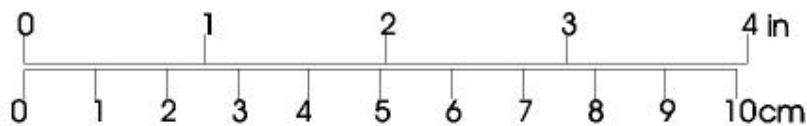
Sheet 27



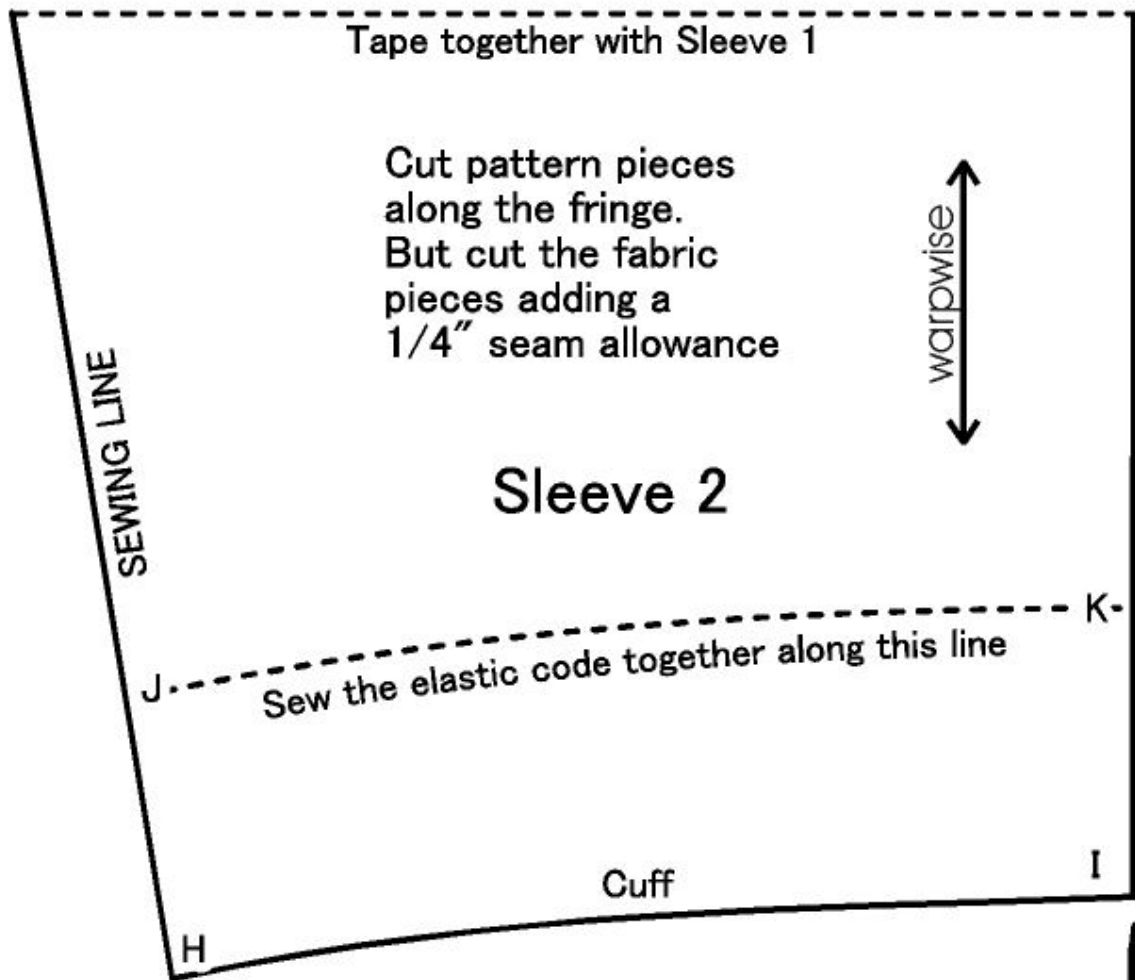
Absolute sweet Cindy in the scullery
 Soft cloth doll DMX-80
 Copy right 2004 by Doku (doku@newon.org)
 See below for license of this pattern
www.newon.org/doku/hobby/scd/license.html



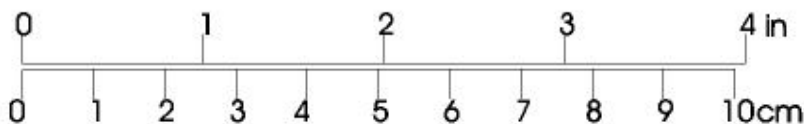
Sheet 28



Absolute sweet Cindy in the scullery
 Soft cloth doll DMX-80
 Copy right 2004 by Doku (doku@newon.org)
 See below for license of this pattern
www.newon.org/doku/hobby/scd/license.html



Sheet 29



Absolute sweet Cindy in the scullery
 Soft cloth doll DMX-80
 Copy right 2004 by Doku (doku@newon.org)
 See below for license of this pattern
www.newon.org/doku/hobby/scd/license.html